



## **DESIGN REVIEW COMMISSION**

**October 6, 2021**

### **MEETING AGENDA:**

**I. CALL TO ORDER**

**II. APPROVAL OF AGENDA**

**III. APPROVAL OF MINUTES**

**IV. OLD BUSINESS - NONE**

**V. NEW BUSINESS - ACTION ITEMS**

- a. Commission to make a recommendation for Jonesboro Logistics Center – Jonesboro Road, Old Morrow Road, and Raymond Street; Parcel Nos. 12049C D002 and 12049D A006; New warehousing facility (three buildings).
- b. Commission to make a recommendation for Total Lifestyle Change – 177 North Main Street Parcel No. 13240D C004; Replacement sign panel for new business in Historic District.
- c. Commission to make a recommendation for Main Street Grocery Mart – 281 North Main Street; Parcel No 13209C C003; New sign panel for new business.
- d. Commission to make a recommendation for Restaurant – 234 South Main Street; Parcel No. 05241D D008A; Renovation of existing business for restaurant.

**VI. ADJOURNMENT**



CITY OF JONESBORO, GEORGIA COUNCIL  
**Agenda Item Summary**

Agenda Item #

5.a

- a

COUNCIL MEETING DATE  
October 6, 2021

Requesting Agency (Initiator)

Office of the City Manager

Sponsor(s)

Community Development Director Allen

**Requested Action** (Identify appropriate Action or Motion, purpose, cost, timeframe, etc.)

Commission to make a recommendation for Jonesboro Logistics Center – Jonesboro Road, Old Morrow Road, and Raymond Street; Parcel Nos. 12049C D002 and 12049D A006; New warehousing facility (three buildings).

**Requirement for Board Action** (Cite specific Council policy, statute or code requirement)

City Code Section 86-108 – M-1 Zoning Standards

**Is this Item Goal Related?** (If yes, describe how this action meets the specific Board Focus Area or Goal)

Yes Economic Development, Beautification, Community Planning, Neighborhood and Business Revitalization

**Summary & Background**

(First sentence includes Agency recommendation. Provide an executive summary of the action that gives an overview of the relevant details for the item.)

Agency recommendation – **Approval of exterior of buildings**; Last summer, in the northern part of the City, two parcels fronting Jonesboro Road, Raymond Street, and Old Morrow Road were approved for a warehousing / storage facility (one of the parcels was annexed into the City). The property is zoned M-1 Light Industrial and is not within any Overlay District. Since there are houses along Raymond Street, approval conditions were geared towards protecting the residents' privacy with buffering. The property has always been vacant. The northern portion of Old Morrow Road near here has had industrial-type uses for a long time.

This development will consist of three large logistics building with bays for unloading trucks. Only the front of Building 100 will be readily seen from the most public road, Jonesboro Road, where the main entrance will be. The entrance and the detention ponds near the entrance will be adorned with quality landscaping and the ponds will have decorative fencing.

The exterior of the buildings will have a modern look, similar to LTI. Most of the exterior of the buildings will consist of painted concrete panels and glass. The bay doors for Building 100 will face away from Jonesboro Rd.

**Fiscal Impact**

(Include projected cost, approved budget amount and account number, source of funds, and any future funding requirements.)

Private developer

**Exhibits Attached** (Provide copies of originals, number exhibits consecutively, and label all exhibits in the upper right corner.)

- Property Pictures
- Building 100
- Building 200
- Building 300
- Perspective

**FOLLOW-UP APPROVAL ACTION (City Clerk)**

Typed Name and Title

Ricky L. Clark, City Manager

Date

October, 6, 2021

Signature

City Clerk's Office

- Site Plan and Landscaping
- Acceptance Letter

5.a

**Staff Recommendation** *(Type Name, Title, Agency and Phone)*

**Approval**

Google Maps 298 GA-54



Image capture: Aug 2017 @ 2021 Google

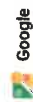
Jonesboro, Georgia



Street View - Aug 2017



Jonesboro, Georgia



Street View - May 2012

Image capture: May 2012 © 2021 Google

Google Maps 7720 Old Morrow Rd



Image capture: Feb 2021 © 2021 Google

Jonesboro, Georgia



Street View - Feb 2021

# JONESBORO LOGISTICS CENTER BLDG 100

SEMI-HEATED (ASHRAE 90.1)



JONESBORO, GA  
DRAWING INDEX

## ABBREVIATIONS

SYMBOL	ABBREVIATION	DESCRIPTION
AC	AC	AC
AD	AD	AD
AE	AE	AE
AF	AF	AF
AG	AG	AG
AH	AH	AH
AI	AI	AI
AL	AL	AL
AM	AM	AM
AN	AN	AN
AO	AO	AO
AP	AP	AP
AQ	AQ	AQ
AR	AR	AR
AS	AS	AS
AT	AT	AT
AV	AV	AV
AW	AW	AW
AX	AX	AX
AY	AY	AY
AZ	AZ	AZ
BA	BA	BA
BB	BB	BB
BC	BC	BC
BD	BD	BD
BE	BE	BE
BF	BF	BF
BG	BG	BG
BH	BH	BH
BI	BI	BI
BJ	BJ	BJ
BK	BK	BK
BL	BL	BL
BM	BM	BM
BN	BN	BN
BO	BO	BO
BP	BP	BP
BQ	BQ	BQ
BR	BR	BR
BS	BS	BS
BT	BT	BT
BV	BV	BV
BW	BW	BW
BX	BX	BX
BY	BY	BY
BZ	BZ	BZ
CA	CA	CA
CB	CB	CB
CC	CC	CC
CD	CD	CD
CE	CE	CE
CF	CF	CF
CG	CG	CG
CH	CH	CH
CI	CI	CI
CJ	CJ	CJ
CK	CK	CK
CL	CL	CL
CM	CM	CM
CN	CN	CN
CO	CO	CO
CP	CP	CP
CQ	CQ	CQ
CR	CR	CR
CS	CS	CS
CT	CT	CT
CU	CU	CU
CV	CV	CV
CW	CW	CW
CX	CX	CX
CY	CY	CY
CZ	CZ	CZ
DA	DA	DA
DB	DB	DB
DC	DC	DC
DD	DD	DD
DE	DE	DE
DF	DF	DF
DG	DG	DG
DH	DH	DH
DI	DI	DI
DJ	DJ	DJ
DK	DK	DK
DL	DL	DL
DM	DM	DM
DN	DN	DN
DO	DO	DO
DP	DP	DP
DQ	DQ	DQ
DR	DR	DR
DS	DS	DS
DT	DT	DT
DV	DV	DV
DW	DW	DW
DX	DX	DX
DY	DY	DY
DZ	DZ	DZ
EA	EA	EA
EB	EB	EB
EC	EC	EC
ED	ED	ED
EE	EE	EE
EF	EF	EF
EG	EG	EG
EH	EH	EH
EI	EI	EI
EJ	EJ	EJ
EK	EK	EK
EL	EL	EL
EM	EM	EM
EN	EN	EN
EO	EO	EO
EP	EP	EP
EQ	EQ	EQ
ER	ER	ER
ES	ES	ES
ET	ET	ET
EU	EU	EU
EV	EV	EV
EW	EW	EW
EX	EX	EX
EY	EY	EY
EZ	EZ	EZ
FA	FA	FA
FB	FB	FB
FC	FC	FC
FD	FD	FD
FE	FE	FE
FF	FF	FF
FG	FG	FG
FH	FH	FH
FI	FI	FI
FJ	FJ	FJ
FK	FK	FK
FL	FL	FL
FM	FM	FM
FN	FN	FN
FO	FO	FO
FP	FP	FP
FQ	FQ	FQ
FR	FR	FR
FS	FS	FS
FT	FT	FT
FV	FV	FV
FW	FW	FW
FX	FX	FX
FY	FY	FY
FZ	FZ	FZ
GA	GA	GA
GB	GB	GB
GC	GC	GC
GD	GD	GD
GE	GE	GE
GF	GF	GF
GG	GG	GG
GH	GH	GH
GI	GI	GI
GJ	GJ	GJ
GK	GK	GK
GL	GL	GL
GM	GM	GM
GN	GN	GN
GO	GO	GO
GP	GP	GP
GQ	GQ	GQ
GR	GR	GR
GS	GS	GS
GT	GT	GT
GU	GU	GU
GV	GV	GV
GW	GW	GW
GX	GX	GX
GY	GY	GY
GZ	GZ	GZ
HA	HA	HA
HB	HB	HB
HC	HC	HC
HD	HD	HD
HE	HE	HE
HF	HF	HF
HG	HG	HG
HH	HH	HH
HI	HI	HI
HJ	HJ	HJ
HK	HK	HK
HL	HL	HL
HM	HM	HM
HN	HN	HN
HO	HO	HO
HP	HP	HP
HQ	HQ	HQ
HR	HR	HR
HS	HS	HS
HT	HT	HT
HV	HV	HV
HW	HW	HW
HX	HX	HX
HY	HY	HY
HZ	HZ	HZ
IA	IA	IA
IB	IB	IB
IC	IC	IC
ID	ID	ID
IE	IE	IE
IF	IF	IF
IG	IG	IG
IH	IH	IH
II	II	II
IJ	IJ	IJ
IK	IK	IK
IL	IL	IL
IM	IM	IM
IN	IN	IN
IO	IO	IO
IP	IP	IP
IQ	IQ	IQ
IR	IR	IR
IS	IS	IS
IT	IT	IT
IU	IU	IU
IV	IV	IV
IW	IW	IW
IX	IX	IX
IY	IY	IY
IZ	IZ	IZ
JA	JA	JA
JB	JB	JB
JC	JC	JC
JD	JD	JD
JE	JE	JE
JF	JF	JF
JG	JG	JG
JH	JH	JH
JI	JI	JI
JJ	JJ	JJ
JK	JK	JK
JL	JL	JL
JM	JM	JM
JN	JN	JN
JO	JO	JO
JP	JP	JP
JQ	JQ	JQ
JR	JR	JR
JS	JS	JS
JT	JT	JT
JV	JV	JV
JW	JW	JW
JX	JX	JX
JY	JY	JY
JZ	JZ	JZ
KA	KA	KA
KB	KB	KB
KC	KC	KC
KD	KD	KD
KE	KE	KE
KF	KF	KF
KG	KG	KG
KH	KH	KH
KI	KI	KI
KJ	KJ	KJ
KK	KK	KK
KL	KL	KL
KM	KM	KM
KN	KN	KN
KO	KO	KO
KP	KP	KP
KQ	KQ	KQ
KR	KR	KR
KS	KS	KS
KT	KT	KT
KV	KV	KV
KW	KW	KW
KX	KX	KX
KY	KY	KY
KZ	KZ	KZ
LA	LA	LA
LB	LB	LB
LC	LC	LC
LD	LD	LD
LE	LE	LE
LF	LF	LF
LG	LG	LG
LH	LH	LH
LI	LI	LI
LJ	LJ	LJ
LK	LK	LK
LL	LL	LL
LM	LM	LM
LN	LN	LN
LO	LO	LO
LP	LP	LP
LQ	LQ	LQ
LR	LR	LR
LS	LS	LS
LT	LT	LT
LV	LV	LV
LW	LW	LW
LX	LX	LX
LY	LY	LY
LZ	LZ	LZ
MA	MA	MA
MB	MB	MB
MC	MC	MC
MD	MD	MD
ME	ME	ME
MF	MF	MF
MG	MG	MG
MH	MH	MH
MI	MI	MI
MJ	MJ	MJ
MK	MK	MK
ML	ML	ML
MM	MM	MM
MN	MN	MN
MO	MO	MO
MP	MP	MP
MQ	MQ	MQ
MR	MR	MR
MS	MS	MS
MT	MT	MT
MV	MV	MV
MW	MW	MW
MX	MX	MX
MY	MY	MY
MZ	MZ	MZ
NA	NA	NA
NB	NB	NB
NC	NC	NC
ND	ND	ND
NE	NE	NE
NF	NF	NF
NG	NG	NG
NH	NH	NH
NI	NI	NI
NJ	NJ	NJ
NK	NK	NK
NL	NL	NL
NM	NM	NM
NO	NO	NO
NP	NP	NP
NQ	NQ	NQ
NR	NR	NR
NS	NS	NS
NT	NT	NT
NV	NV	NV
NW	NW	NW
NX	NX	NX
NY	NY	NY
NZ	NZ	NZ
OA	OA	OA
OB	OB	OB
OC	OC	OC
OD	OD	OD
OE	OE	OE
OF	OF	OF
OG	OG	OG
OH	OH	OH
OI	OI	OI
OJ	OJ	OJ
OK	OK	OK
OL	OL	OL
OM	OM	OM
ON	ON	ON
OO	OO	OO
OP	OP	OP
OQ	OQ	OQ
OR	OR	OR
OS	OS	OS
OT	OT	OT
OV	OV	OV
OW	OW	OW
OX	OX	OX
OY	OY	OY
OZ	OZ	OZ
PA	PA	PA
PB	PB	PB
PC	PC	PC
PD	PD	PD
PE	PE	PE
PF	PF	PF
PG	PG	PG
PH	PH	PH
PI	PI	PI
PJ	PJ	PJ
PK	PK	PK
PL	PL	PL
PM	PM	PM
PN	PN	PN
PO	PO	PO
PP	PP	PP
PQ	PQ	PQ
PR	PR	PR
PS	PS	PS
PT	PT	PT
PV	PV	PV
PW	PW	PW
PX	PX	PX
PY	PY	PY
PZ	PZ	PZ
QA	QA	QA
QB	QB	QB
QC	QC	QC
QD	QD	QD
QE	QE	QE
QF	QF	QF
QG	QG	QG
QH	QH	QH
QI	QI	QI
QJ	QJ	QJ
QK	QK	QK
QL	QL	QL
QM	QM	QM
QN	QN	QN
QO	QO	QO
QP	QP	QP
QQ	QQ	QQ
QR	QR	QR
QS	QS	QS
QT	QT	QT
QV	QV	QV
QW	QW	QW
QX	QX	QX
QY	QY	QY
QZ	QZ	QZ
RA	RA	RA
RB	RB	RB
RC	RC	RC
RD	RD	RD
RE	RE	RE
RF	RF	RF
RG	RG	RG
RH	RH	RH
RI	RI	RI
RJ	RJ	RJ
RK	RK	RK
RL	RL	RL
RM	RM	RM
RO	RO	RO
RP	RP	RP
RQ	RQ	RQ
RR	RR	RR
RS	RS	RS
RT	RT	RT
RV	RV	RV
RW	RW	RW
RX	RX	RX
RY	RY	RY
RZ	RZ	RZ
SA	SA	SA
SB	SB	SB
SC	SC	SC
SD	SD	SD
SE	SE	SE
SF	SF	SF
SG	SG	SG
SH	SH	SH
SI	SI	SI
SJ	SJ	SJ
SK	SK	SK
SL	SL	SL
SM	SM	SM
SN	SN	SN
SO	SO	SO
SP	SP	SP
SQ	SQ	SQ
SR	SR	SR
SS	SS	SS
ST	ST	ST
SV	SV	SV
SW	SW	SW
SX	SX	SX
SY	SY	SY
SZ	SZ	SZ
TA	TA	TA
TB	TB	TB
TC	TC	TC
TD	TD	TD
TE	TE	TE
TF	TF	TF
TG	TG	TG
TH	TH	TH
TI	TI	TI
TJ	TJ	TJ
TK	TK	TK
TL	TL	TL
TM	TM	TM
TO	TO	TO
TP	TP	TP
TQ	TQ	TQ
TR	TR	TR
TS	TS	TS
TT	TT	TT
TV	TV	TV
TW	TW	TW
TX	TX	TX
TY	TY	TY
TZ	TZ	TZ
UA	UA	UA
UB	UB	UB
UC	UC	UC
UD	UD	UD
UE	UE	UE
UF	UF	UF
UG	UG	UG
UH	UH	UH
UI	UI	UI
UJ	UJ	UJ
UK	UK	UK
UL	UL	UL
UM	UM	UM
UN	UN	UN
UO	UO	UO
UP	UP	UP
UQ	UQ	UQ
UR	UR	UR
US	US	US
UT	UT	UT
UV	UV	UV
UW	UW	UW
UX	UX	UX
UY	UY	UY
UZ	UZ	UZ
VA	VA	VA
VB	VB	VB
VC	VC	VC
VD	VD	VD
VE	VE	VE
VF	VF	VF
VG	VG	VG
VH	VH	VH
VI	VI	VI
VJ	VJ	VJ
VK	VK	VK
VL	VL	VL
VM	VM	VM
VO	VO	VO
VP	VP	VP
VQ	VQ	VQ
VR	VR	VR
VS	VS	VS
VT	VT	VT
VV	VV	VV
VW	VW	VW
VX	VX	VX
VY	VY	VY
VZ	VZ	VZ
WA	WA	WA
WB	WB	WB
WC	WC	



JONESBORO LOGISTICS  
CENTER  
BUILDING 100

CANTON COUNTY, PA

ATLAS COLLABORATIVE, LLC. These drawings are intended to be used for the construction of the project. The drawings are not to be used for any other purpose without the written consent of Atlas Collaborative, LLC.

Project Record

NO. 100-1	DATE 10/1/2018
NO. 100-2	DATE 10/1/2018
NO. 100-3	DATE 10/1/2018
NO. 100-4	DATE 10/1/2018
NO. 100-5	DATE 10/1/2018
NO. 100-6	DATE 10/1/2018
NO. 100-7	DATE 10/1/2018
NO. 100-8	DATE 10/1/2018
NO. 100-9	DATE 10/1/2018
NO. 100-10	DATE 10/1/2018

Revisions  
1. 10/1/2018  
2. 10/1/2018  
3. 10/1/2018  
4. 10/1/2018  
5. 10/1/2018  
6. 10/1/2018  
7. 10/1/2018  
8. 10/1/2018  
9. 10/1/2018  
10. 10/1/2018

Sheet No.	Sheet Title
Sheet No.	Sheet Title
Sheet No.	Sheet Title
Sheet No.	Sheet Title
Sheet No.	Sheet Title
Sheet No.	Sheet Title
Sheet No.	Sheet Title
Sheet No.	Sheet Title
Sheet No.	Sheet Title
Sheet No.	Sheet Title

EXTERIOR ELEVATIONS

A.201

ISSUED FOR CONSTRUCTION

5.a.b

GENERAL NOTES

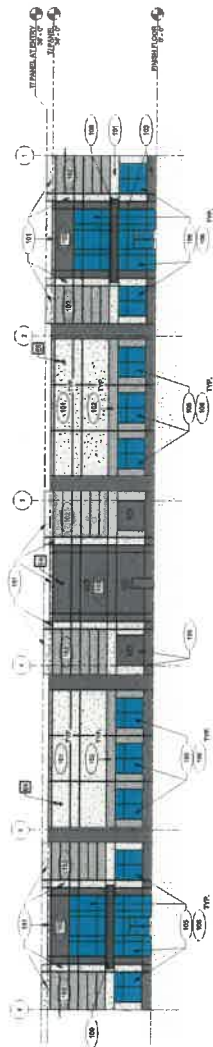
- 1. ALL GLASS TO BE TYPE 3, 1/2" THICK, ALL GLASS TO BE TINTED TO MATCH EXISTING GLASS.
- 2. ALL GLASS TO BE SET IN ALUMINUM OR STAINLESS STEEL FRAMES.
- 3. ALL GLASS TO BE SET IN ALUMINUM OR STAINLESS STEEL FRAMES.
- 4. ALL GLASS TO BE SET IN ALUMINUM OR STAINLESS STEEL FRAMES.
- 5. ALL GLASS TO BE SET IN ALUMINUM OR STAINLESS STEEL FRAMES.
- 6. ALL GLASS TO BE SET IN ALUMINUM OR STAINLESS STEEL FRAMES.
- 7. ALL GLASS TO BE SET IN ALUMINUM OR STAINLESS STEEL FRAMES.
- 8. ALL GLASS TO BE SET IN ALUMINUM OR STAINLESS STEEL FRAMES.
- 9. ALL GLASS TO BE SET IN ALUMINUM OR STAINLESS STEEL FRAMES.
- 10. ALL GLASS TO BE SET IN ALUMINUM OR STAINLESS STEEL FRAMES.

KEYNOTES

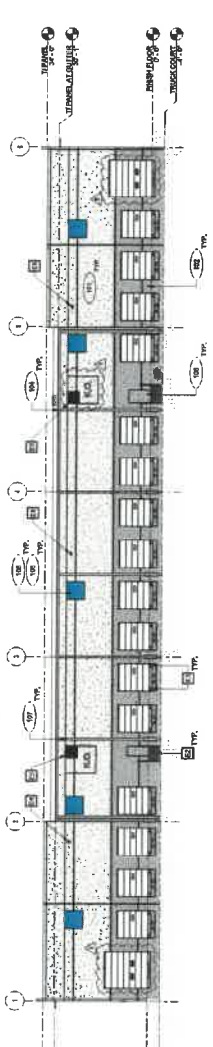
- 1. CONCRETE FINISH: BROOM FINISH, SEE PLAN.
- 2. STAIR AND HANDRAILS: TYPE 304 STAINLESS STEEL, 1 1/2" DIA.
- 3. STAIR AND HANDRAILS: TYPE 304 STAINLESS STEEL, 1 1/2" DIA.
- 4. STAIR AND HANDRAILS: TYPE 304 STAINLESS STEEL, 1 1/2" DIA.
- 5. STAIR AND HANDRAILS: TYPE 304 STAINLESS STEEL, 1 1/2" DIA.
- 6. STAIR AND HANDRAILS: TYPE 304 STAINLESS STEEL, 1 1/2" DIA.
- 7. STAIR AND HANDRAILS: TYPE 304 STAINLESS STEEL, 1 1/2" DIA.
- 8. STAIR AND HANDRAILS: TYPE 304 STAINLESS STEEL, 1 1/2" DIA.
- 9. STAIR AND HANDRAILS: TYPE 304 STAINLESS STEEL, 1 1/2" DIA.
- 10. STAIR AND HANDRAILS: TYPE 304 STAINLESS STEEL, 1 1/2" DIA.

EXTERIOR FINISH SCHEDULE

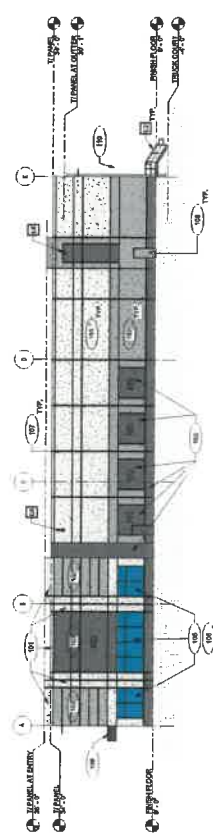
101	CONCRETE FINISH: BROOM FINISH, SEE PLAN.
102	CONCRETE FINISH: BROOM FINISH, SEE PLAN.
103	CONCRETE FINISH: BROOM FINISH, SEE PLAN.
104	CONCRETE FINISH: BROOM FINISH, SEE PLAN.
105	CONCRETE FINISH: BROOM FINISH, SEE PLAN.
106	CONCRETE FINISH: BROOM FINISH, SEE PLAN.
107	CONCRETE FINISH: BROOM FINISH, SEE PLAN.
108	CONCRETE FINISH: BROOM FINISH, SEE PLAN.
109	CONCRETE FINISH: BROOM FINISH, SEE PLAN.
110	CONCRETE FINISH: BROOM FINISH, SEE PLAN.



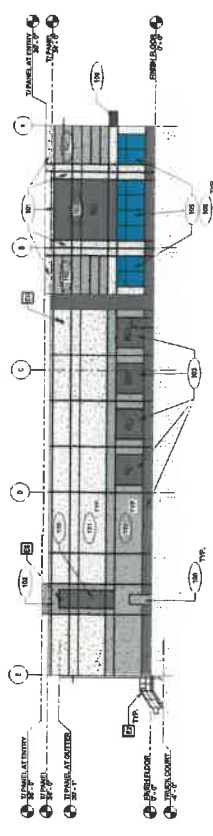
1 OVERALL WEST ELEVATION  
SCALE: 1/8" = 1'-0"



2 OVERALL EAST ELEVATION  
SCALE: 1/8" = 1'-0"



3 OVERALL SOUTH ELEVATION  
SCALE: 1/8" = 1'-0"

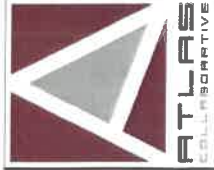


4 OVERALL NORTH ELEVATION  
SCALE: 1/8" = 1'-0"

[illegible][illegible][illegible][illegible]

KEYNOTE	WALL TYPE	EXTENSION ELEVATION MULTI-LEVEL PRESSURE PARTITION	WALL SECTION INDICATOR	ELEVATION INDICATOR	NETAL REFERENCE INDICATOR	INTERIOR ELEVATION INDICATOR	WINDOW REFERENCE NUMBER	ROOF NAME & NUMBER	CORNER FINISH	FLOOR FINISH	WALL FINISH BASE FINISH	ACCEPT WALL FINISH	FLOORING INDICATION	MULTILEVEL GARMENT FACE PLUG	MULTILEVEL COUNTERPOINT FINISH	WALL FINISH BASE FINISH	WALL FINISH BASE FINISH	WALL FINISH BASE FINISH
1	2	3	4	5	6	7	8	9	10	11	12	13	14	15	16	17	18	19





**JONESBORO, GA**  
**DRAWING INDEX**

## DRAWING INDEX

## ABBREVIATIONS

[illegible]

## SYMBOLS:

	KEYNOTE		WALL TYPE		EXTERIOR INSULATION MINIMUM 1" FIBERGLASS INSULATION		WALL SECTION INSULATION		ELEVATION INSULATION		DETAIL REFERENCE MINIMUM 1" FIBERGLASS INSULATION		INTERIOR ELEVATION MARKER		DOOR REFERENCE NUMBER		WINDOW REFERENCE NUMBER		ROOM NAME & NUMBER		CEILING FINISH		FLOOR FINISH		WALL FINISH		BASE FINISH		ACCENT WALL FINISH		FLOORING TRANSITION		MILLWORK CABINET FACE FINISH		MILLWORK COUNTERTOP FINISH		FLOOR-MOUNTED DOOR WALL FINISH		DOOR FRAME
--	---------	--	-----------	--	--	--	-------------------------	--	----------------------	--	---	--	---------------------------	--	-----------------------	--	-------------------------	--	--------------------	--	----------------	--	--------------	--	-------------	--	-------------	--	--------------------	--	---------------------	--	------------------------------	--	----------------------------	--	-----------------------------------	--	------------

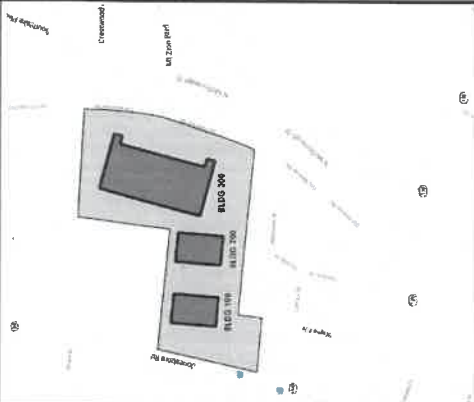
## PROJECT DIRECTORY

[illegible]

## GENERAL NOTES

- [illegible]

## LOCATION MAP







Attachment: Perspective (2983 : Jonesboro Logistics Center)

TP4.1

SHEET NO.

20-028

PROJECT NO.

TREE REPLACEMENT PLAN

SCALE: 1" = 30'  
DATE: 08/08/2020  
DRAWN BY: LAMAR LAMAR, P.E.  
PROJECT MANAGER: JACOB CHIRBAK  
9/25/20 CHIRBAK

REVISIONS:	DATE	BY	REVISIONS
01	10/08/20	JACOB CHIRBAK	FINAL PLAN
02	10/08/20	JACOB CHIRBAK	REVISIONS
03	10/08/20	JACOB CHIRBAK	REVISIONS
04	10/08/20	JACOB CHIRBAK	REVISIONS
05	10/08/20	JACOB CHIRBAK	REVISIONS
06	10/08/20	JACOB CHIRBAK	REVISIONS
07	10/08/20	JACOB CHIRBAK	REVISIONS
08	10/08/20	JACOB CHIRBAK	REVISIONS
09	10/08/20	JACOB CHIRBAK	REVISIONS
10	10/08/20	JACOB CHIRBAK	REVISIONS
11	10/08/20	JACOB CHIRBAK	REVISIONS
12	10/08/20	JACOB CHIRBAK	REVISIONS
13	10/08/20	JACOB CHIRBAK	REVISIONS
14	10/08/20	JACOB CHIRBAK	REVISIONS
15	10/08/20	JACOB CHIRBAK	REVISIONS
16	10/08/20	JACOB CHIRBAK	REVISIONS
17	10/08/20	JACOB CHIRBAK	REVISIONS
18	10/08/20	JACOB CHIRBAK	REVISIONS
19	10/08/20	JACOB CHIRBAK	REVISIONS
20	10/08/20	JACOB CHIRBAK	REVISIONS
21	10/08/20	JACOB CHIRBAK	REVISIONS
22	10/08/20	JACOB CHIRBAK	REVISIONS
23	10/08/20	JACOB CHIRBAK	REVISIONS
24	10/08/20	JACOB CHIRBAK	REVISIONS
25	10/08/20	JACOB CHIRBAK	REVISIONS
26	10/08/20	JACOB CHIRBAK	REVISIONS
27	10/08/20	JACOB CHIRBAK	REVISIONS
28	10/08/20	JACOB CHIRBAK	REVISIONS
29	10/08/20	JACOB CHIRBAK	REVISIONS
30	10/08/20	JACOB CHIRBAK	REVISIONS
31	10/08/20	JACOB CHIRBAK	REVISIONS
32	10/08/20	JACOB CHIRBAK	REVISIONS
33	10/08/20	JACOB CHIRBAK	REVISIONS
34	10/08/20	JACOB CHIRBAK	REVISIONS
35	10/08/20	JACOB CHIRBAK	REVISIONS
36	10/08/20	JACOB CHIRBAK	REVISIONS
37	10/08/20	JACOB CHIRBAK	REVISIONS
38	10/08/20	JACOB CHIRBAK	REVISIONS
39	10/08/20	JACOB CHIRBAK	REVISIONS
40	10/08/20	JACOB CHIRBAK	REVISIONS
41	10/08/20	JACOB CHIRBAK	REVISIONS
42	10/08/20	JACOB CHIRBAK	REVISIONS
43	10/08/20	JACOB CHIRBAK	REVISIONS
44	10/08/20	JACOB CHIRBAK	REVISIONS
45	10/08/20	JACOB CHIRBAK	REVISIONS
46	10/08/20	JACOB CHIRBAK	REVISIONS
47	10/08/20	JACOB CHIRBAK	REVISIONS
48	10/08/20	JACOB CHIRBAK	REVISIONS
49	10/08/20	JACOB CHIRBAK	REVISIONS
50	10/08/20	JACOB CHIRBAK	REVISIONS
51	10/08/20	JACOB CHIRBAK	REVISIONS
52	10/08/20	JACOB CHIRBAK	REVISIONS
53	10/08/20	JACOB CHIRBAK	REVISIONS
54	10/08/20	JACOB CHIRBAK	REVISIONS
55	10/08/20	JACOB CHIRBAK	REVISIONS
56	10/08/20	JACOB CHIRBAK	REVISIONS
57	10/08/20	JACOB CHIRBAK	REVISIONS
58	10/08/20	JACOB CHIRBAK	REVISIONS
59	10/08/20	JACOB CHIRBAK	REVISIONS
60	10/08/20	JACOB CHIRBAK	REVISIONS
61	10/08/20	JACOB CHIRBAK	REVISIONS
62	10/08/20	JACOB CHIRBAK	REVISIONS
63	10/08/20	JACOB CHIRBAK	REVISIONS
64	10/08/20	JACOB CHIRBAK	REVISIONS
65	10/08/20	JACOB CHIRBAK	REVISIONS
66	10/08/20	JACOB CHIRBAK	REVISIONS
67	10/08/20	JACOB CHIRBAK	REVISIONS
68	10/08/20	JACOB CHIRBAK	REVISIONS
69	10/08/20	JACOB CHIRBAK	REVISIONS
70	10/08/20	JACOB CHIRBAK	REVISIONS
71	10/08/20	JACOB CHIRBAK	REVISIONS
72	10/08/20	JACOB CHIRBAK	REVISIONS
73	10/08/20	JACOB CHIRBAK	REVISIONS
74	10/08/20	JACOB CHIRBAK	REVISIONS
75	10/08/20	JACOB CHIRBAK	REVISIONS
76	10/08/20	JACOB CHIRBAK	REVISIONS
77	10/08/20	JACOB CHIRBAK	REVISIONS
78	10/08/20	JACOB CHIRBAK	REVISIONS
79	10/08/20	JACOB CHIRBAK	REVISIONS
80	10/08/20	JACOB CHIRBAK	REVISIONS
81	10/08/20	JACOB CHIRBAK	REVISIONS
82	10/08/20	JACOB CHIRBAK	REVISIONS
83	10/08/20	JACOB CHIRBAK	REVISIONS
84	10/08/20	JACOB CHIRBAK	REVISIONS
85	10/08/20	JACOB CHIRBAK	REVISIONS
86	10/08/20	JACOB CHIRBAK	REVISIONS
87	10/08/20	JACOB CHIRBAK	REVISIONS
88	10/08/20	JACOB CHIRBAK	REVISIONS
89	10/08/20	JACOB CHIRBAK	REVISIONS
90	10/08/20	JACOB CHIRBAK	REVISIONS
91	10/08/20	JACOB CHIRBAK	REVISIONS
92	10/08/20	JACOB CHIRBAK	REVISIONS
93	10/08/20	JACOB CHIRBAK	REVISIONS
94	10/08/20	JACOB CHIRBAK	REVISIONS
95	10/08/20	JACOB CHIRBAK	REVISIONS
96	10/08/20	JACOB CHIRBAK	REVISIONS
97	10/08/20	JACOB CHIRBAK	REVISIONS
98	10/08/20	JACOB CHIRBAK	REVISIONS
99	10/08/20	JACOB CHIRBAK	REVISIONS
100	10/08/20	JACOB CHIRBAK	REVISIONS

PROJECT: BUFFINGTON CENTER INDUSTRIAL  
PROJECT NAME B  
LAND LOT 129  
8-F DISTRICT  
FULTON COUNTY, GEORGIA  
0 ROOSEVELT HWY



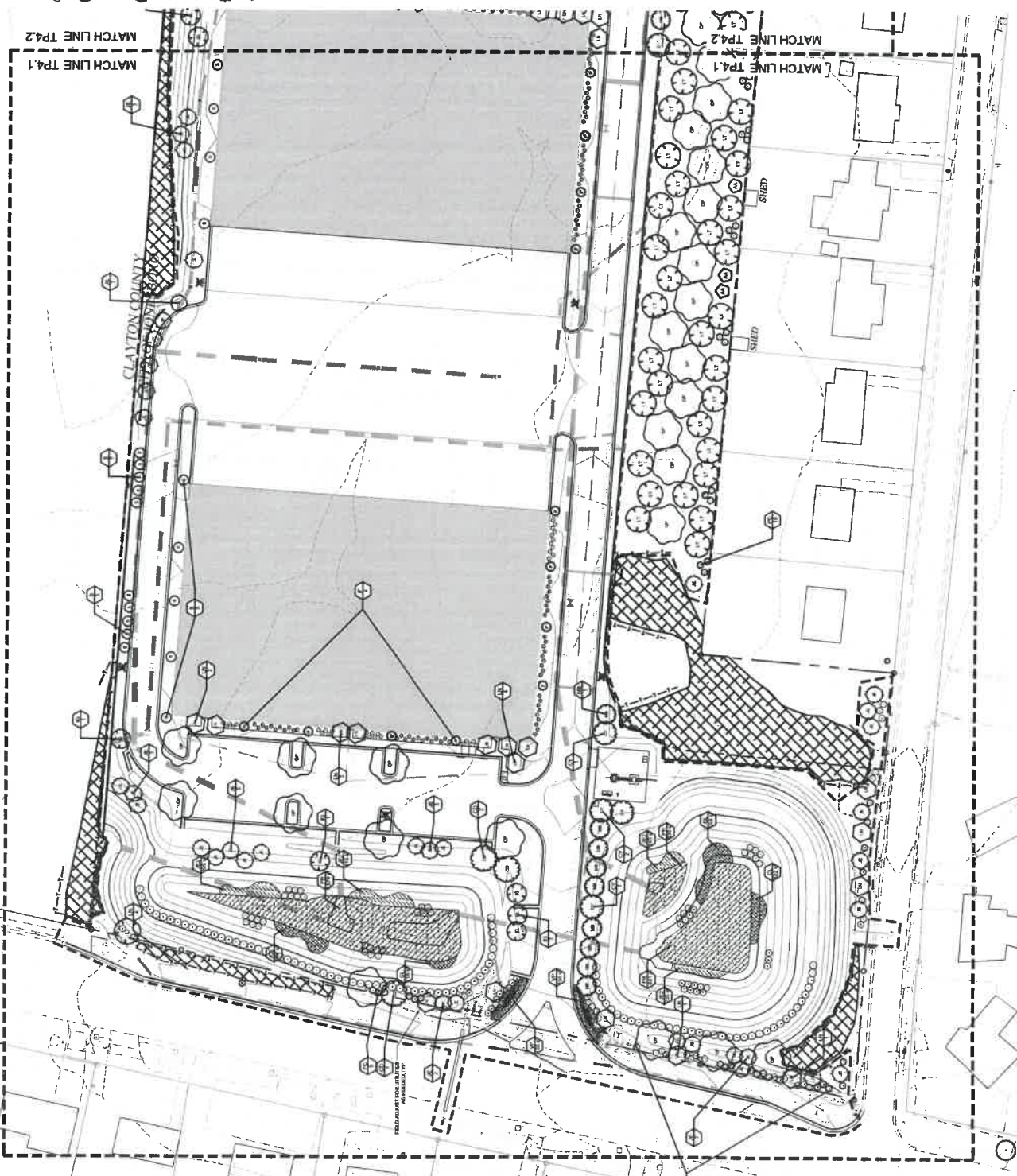
LANDSCAPE ARCHITECTURE  
CIVIL ENGINEERING  
LAND PLANNING



201 TOWNERS ROAD SUITE 100  
ALAMOGADO, TEXAS 78002  
TEL: 281.300.1000  
WWW.JACOBANDASSOCIATES.COM



PLANT SCHEDULE FULL SITE
1. 1" DB CALLENDARIA
2. 1" DB LIRIODENDRON
3. 1" DB LIRIODENDRON
4. 1" DB LIRIODENDRON
5. 1" DB LIRIODENDRON
6. 1" DB LIRIODENDRON
7. 1" DB LIRIODENDRON
8. 1" DB LIRIODENDRON
9. 1" DB LIRIODENDRON
10. 1" DB LIRIODENDRON
11. 1" DB LIRIODENDRON
12. 1" DB LIRIODENDRON
13. 1" DB LIRIODENDRON
14. 1" DB LIRIODENDRON
15. 1" DB LIRIODENDRON
16. 1" DB LIRIODENDRON
17. 1" DB LIRIODENDRON
18. 1" DB LIRIODENDRON
19. 1" DB LIRIODENDRON
20. 1" DB LIRIODENDRON
21. 1" DB LIRIODENDRON
22. 1" DB LIRIODENDRON
23. 1" DB LIRIODENDRON
24. 1" DB LIRIODENDRON
25. 1" DB LIRIODENDRON
26. 1" DB LIRIODENDRON
27. 1" DB LIRIODENDRON
28. 1" DB LIRIODENDRON
29. 1" DB LIRIODENDRON
30. 1" DB LIRIODENDRON
31. 1" DB LIRIODENDRON
32. 1" DB LIRIODENDRON
33. 1" DB LIRIODENDRON
34. 1" DB LIRIODENDRON
35. 1" DB LIRIODENDRON
36. 1" DB LIRIODENDRON
37. 1" DB LIRIODENDRON
38. 1" DB LIRIODENDRON
39. 1" DB LIRIODENDRON
40. 1" DB LIRIODENDRON
41. 1" DB LIRIODENDRON
42. 1" DB LIRIODENDRON
43. 1" DB LIRIODENDRON
44. 1" DB LIRIODENDRON
45. 1" DB LIRIODENDRON
46. 1" DB LIRIODENDRON
47. 1" DB LIRIODENDRON
48. 1" DB LIRIODENDRON
49. 1" DB LIRIODENDRON
50. 1" DB LIRIODENDRON
51. 1" DB LIRIODENDRON
52. 1" DB LIRIODENDRON
53. 1" DB LIRIODENDRON
54. 1" DB LIRIODENDRON
55. 1" DB LIRIODENDRON
56. 1" DB LIRIODENDRON
57. 1" DB LIRIODENDRON
58. 1" DB LIRIODENDRON
59. 1" DB LIRIODENDRON
60. 1" DB LIRIODENDRON
61. 1" DB LIRIODENDRON
62. 1" DB LIRIODENDRON
63. 1" DB LIRIODENDRON
64. 1" DB LIRIODENDRON
65. 1" DB LIRIODENDRON
66. 1" DB LIRIODENDRON
67. 1" DB LIRIODENDRON
68. 1" DB LIRIODENDRON
69. 1" DB LIRIODENDRON
70. 1" DB LIRIODENDRON
71. 1" DB LIRIODENDRON
72. 1" DB LIRIODENDRON
73. 1" DB LIRIODENDRON
74. 1" DB LIRIODENDRON
75. 1" DB LIRIODENDRON
76. 1" DB LIRIODENDRON
77. 1" DB LIRIODENDRON
78. 1" DB LIRIODENDRON
79. 1" DB LIRIODENDRON
80. 1" DB LIRIODENDRON
81. 1" DB LIRIODENDRON
82. 1" DB LIRIODENDRON
83. 1" DB LIRIODENDRON
84. 1" DB LIRIODENDRON
85. 1" DB LIRIODENDRON
86. 1" DB LIRIODENDRON
87. 1" DB LIRIODENDRON
88. 1" DB LIRIODENDRON
89. 1" DB LIRIODENDRON
90. 1" DB LIRIODENDRON
91. 1" DB LIRIODENDRON
92. 1" DB LIRIODENDRON
93. 1" DB LIRIODENDRON
94. 1" DB LIRIODENDRON
95. 1" DB LIRIODENDRON
96. 1" DB LIRIODENDRON
97. 1" DB LIRIODENDRON
98. 1" DB LIRIODENDRON
99. 1" DB LIRIODENDRON
100. 1" DB LIRIODENDRON



TP4.2



PROJECT NO.  
20-028

SHEET NO.

TREE REPLACEMENT PLAN

SCALE: 1" = 30'  
DATE: 08/08/20  
DRAWN BY: JLM/ML/STW/PC  
PROJECT MANAGER: JLM/ML/STW/PC  
QA/QC CHECK: JLM/ML/STW/PC

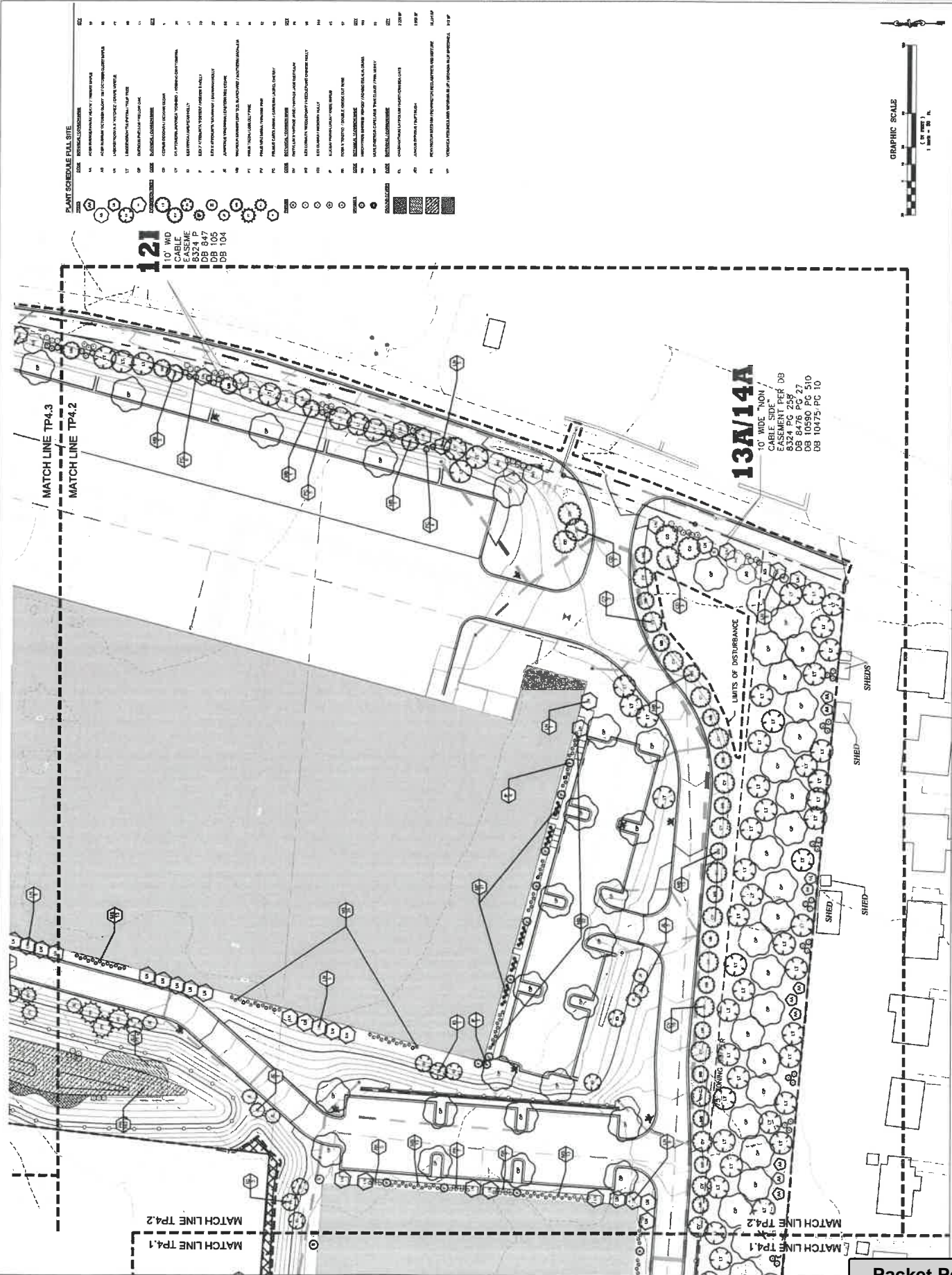
REVISIONS:

NO.	DATE	DESCRIPTION
1	08/08/20	ISSUED FOR PERMIT
2	08/08/20	ISSUED FOR PERMIT
3	08/08/20	ISSUED FOR PERMIT
4	08/08/20	ISSUED FOR PERMIT
5	08/08/20	ISSUED FOR PERMIT
6	08/08/20	ISSUED FOR PERMIT
7	08/08/20	ISSUED FOR PERMIT
8	08/08/20	ISSUED FOR PERMIT
9	08/08/20	ISSUED FOR PERMIT
10	08/08/20	ISSUED FOR PERMIT
11	08/08/20	ISSUED FOR PERMIT
12	08/08/20	ISSUED FOR PERMIT
13	08/08/20	ISSUED FOR PERMIT
14	08/08/20	ISSUED FOR PERMIT
15	08/08/20	ISSUED FOR PERMIT
16	08/08/20	ISSUED FOR PERMIT
17	08/08/20	ISSUED FOR PERMIT
18	08/08/20	ISSUED FOR PERMIT
19	08/08/20	ISSUED FOR PERMIT
20	08/08/20	ISSUED FOR PERMIT
21	08/08/20	ISSUED FOR PERMIT
22	08/08/20	ISSUED FOR PERMIT
23	08/08/20	ISSUED FOR PERMIT
24	08/08/20	ISSUED FOR PERMIT
25	08/08/20	ISSUED FOR PERMIT
26	08/08/20	ISSUED FOR PERMIT
27	08/08/20	ISSUED FOR PERMIT
28	08/08/20	ISSUED FOR PERMIT
29	08/08/20	ISSUED FOR PERMIT
30	08/08/20	ISSUED FOR PERMIT
31	08/08/20	ISSUED FOR PERMIT
32	08/08/20	ISSUED FOR PERMIT
33	08/08/20	ISSUED FOR PERMIT
34	08/08/20	ISSUED FOR PERMIT
35	08/08/20	ISSUED FOR PERMIT
36	08/08/20	ISSUED FOR PERMIT
37	08/08/20	ISSUED FOR PERMIT
38	08/08/20	ISSUED FOR PERMIT
39	08/08/20	ISSUED FOR PERMIT
40	08/08/20	ISSUED FOR PERMIT
41	08/08/20	ISSUED FOR PERMIT
42	08/08/20	ISSUED FOR PERMIT
43	08/08/20	ISSUED FOR PERMIT
44	08/08/20	ISSUED FOR PERMIT
45	08/08/20	ISSUED FOR PERMIT
46	08/08/20	ISSUED FOR PERMIT
47	08/08/20	ISSUED FOR PERMIT
48	08/08/20	ISSUED FOR PERMIT
49	08/08/20	ISSUED FOR PERMIT
50	08/08/20	ISSUED FOR PERMIT
51	08/08/20	ISSUED FOR PERMIT
52	08/08/20	ISSUED FOR PERMIT
53	08/08/20	ISSUED FOR PERMIT
54	08/08/20	ISSUED FOR PERMIT
55	08/08/20	ISSUED FOR PERMIT
56	08/08/20	ISSUED FOR PERMIT
57	08/08/20	ISSUED FOR PERMIT
58	08/08/20	ISSUED FOR PERMIT
59	08/08/20	ISSUED FOR PERMIT
60	08/08/20	ISSUED FOR PERMIT
61	08/08/20	ISSUED FOR PERMIT
62	08/08/20	ISSUED FOR PERMIT
63	08/08/20	ISSUED FOR PERMIT
64	08/08/20	ISSUED FOR PERMIT
65	08/08/20	ISSUED FOR PERMIT
66	08/08/20	ISSUED FOR PERMIT
67	08/08/20	ISSUED FOR PERMIT
68	08/08/20	ISSUED FOR PERMIT
69	08/08/20	ISSUED FOR PERMIT
70	08/08/20	ISSUED FOR PERMIT
71	08/08/20	ISSUED FOR PERMIT
72	08/08/20	ISSUED FOR PERMIT
73	08/08/20	ISSUED FOR PERMIT
74	08/08/20	ISSUED FOR PERMIT
75	08/08/20	ISSUED FOR PERMIT
76	08/08/20	ISSUED FOR PERMIT
77	08/08/20	ISSUED FOR PERMIT
78	08/08/20	ISSUED FOR PERMIT
79	08/08/20	ISSUED FOR PERMIT
80	08/08/20	ISSUED FOR PERMIT
81	08/08/20	ISSUED FOR PERMIT
82	08/08/20	ISSUED FOR PERMIT
83	08/08/20	ISSUED FOR PERMIT
84	08/08/20	ISSUED FOR PERMIT
85	08/08/20	ISSUED FOR PERMIT
86	08/08/20	ISSUED FOR PERMIT
87	08/08/20	ISSUED FOR PERMIT
88	08/08/20	ISSUED FOR PERMIT
89	08/08/20	ISSUED FOR PERMIT
90	08/08/20	ISSUED FOR PERMIT
91	08/08/20	ISSUED FOR PERMIT
92	08/08/20	ISSUED FOR PERMIT
93	08/08/20	ISSUED FOR PERMIT
94	08/08/20	ISSUED FOR PERMIT
95	08/08/20	ISSUED FOR PERMIT
96	08/08/20	ISSUED FOR PERMIT
97	08/08/20	ISSUED FOR PERMIT
98	08/08/20	ISSUED FOR PERMIT
99	08/08/20	ISSUED FOR PERMIT
100	08/08/20	ISSUED FOR PERMIT

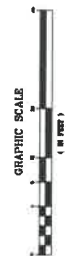
PROJECT:  
BUFFINGTON CENTER  
INDUSTRIAL  
PULTON COUNTY, GEORGIA  
LAND LOT 129  
PROJECT NAME B  
9 ROOSEVELT HWY



LANDSCAPE ARCHITECTURE  
CIVIL ENGINEERING  
LANDSCAPE ARCHITECT  
J. M. SMITH  
11111 MAIN STREET, SUITE 100  
ATLANTA, GEORGIA 30309  
PHONE: (404) 123-4567  
FAX: (404) 123-4568  
WWW.JMSA.COM









## MEMORANDUM

**To:** Mike Martin  
Jonesboro Logistics Center

**From:** David D. Allen  
City of Jonesboro  
124 North Avenue  
Jonesboro, GA 30236

**Date:** October 1, 2021

**Re:** Notification of Request for Design Review Commission – New Warehouse Buildings; Jonesboro Road, Old Morrow Road, and Raymond Street; Parcel Nos. 12049C D002 and 12049D A006

---

Dear Applicant,

This letter is to serve as notification that the City of Jonesboro, Design Review Commission, has accepted your request for review of new buildings located at the property specified above in Jonesboro, Georgia.

Due to the COVID-19 outbreak, the review meeting will be conducted by members via a remote conference call (Zoom Meetings) on Wednesday, October 6, 2021 at 4:30 pm. You will be provided a link to the meeting to participate if you wish. If you are unable to be a part of the meeting, then you will be informed of the recommendation on the following day.

Sincerely,

David D. Allen  
Community Development Director / Zoning Administrator

Attachment: Acceptance Letter (2983 : Jonesboro Logistics Center)



# CITY OF JONESBORO, GEORGIA COUNCIL

## Agenda Item Summary

Agenda Item #

5.b

- b

COUNCIL MEETING DATE

October 6, 2021

## Requesting Agency (Initiator)

Office of the City Manager

## Sponsor(s)

Community Development Director Allen

## Requested Action (Identify appropriate Action or Motion, purpose, cost, timeframe, etc.)

Commission to make a recommendation for Total Lifestyle Change – 177 North Main Street Parcel No. 13240D C004; Replacement sign panel for new business in Historic District.

## Requirement for Board Action (Cite specific Council policy, statute or code requirement)

City Code Section 86-489 and 86-490 – Sign Standards' Sec. 86-495 Historic District Sign Standards

## Is this Item Goal Related? (If yes, describe how this action meets the specific Board Focus Area or Goal)

Yes

Beautification, Community Planning, Neighborhood and Business  
Revitalization, Historic Preservation

## Summary &amp; Background

(First sentence includes Agency recommendation. Provide an executive summary of the action that gives an overview of the relevant details for the item.)

**Agency recommendation – Approval of replacement sign panels;** The applicant's home health care services has just moved into 177 North Main Street. She would like to update the existing ground sign at the property, requiring Design Review Commission and Historic Preservation Commission review. She intends to keep the existing posts in the same location and just update the panels with a fresher look.

**The new sign panel is a double-sided panel, 32 square feet each side, mounted between the two existing wooden posts. The sign panel is 6 feet tall, and about 10 feet from the front of the building and an unknown distance from the right-of-way. No electronics or internal illumination are proposed.**

Sec. 86-489. - General regulations.

- (a) Messages. Any sign allowed under this article may contain any message, except those displaying any statement, word, character or illustration of an obscene nature.
- (b) Non-residential zoning districts. In non-residential zoning districts signs shall be permitted in the following combination of wall and ground signs subject to the provisions hereinafter stated:

- (1) Lot with one building, which building is currently occupied pursuant to a current and valid certificate of occupancy issued by the city.

- a. Combination of one wall sign and one ground sign, subject to the respective size limitations in section 86-490. In addition to section 86-490, each wall sign shall not exceed 7.5 percent of the exterior building facade, without an approved variance

Single building on multiple frontage lots are allowed a total of ten percent of the exterior building facade for wall signs, and may have one additional wall sign, and one additional ground sign (subject to the size limitations in section 86-490). When calculating their allowed square footage, buildings on multiple frontage lots shall base their calculations on the facade with the primary entrance and/or architectural features of the building. Otherwise, the facade used shall be that facade which faces the public road of the greatest capacity. The classification of streets in the thoroughfare plan shall be the basis for determining street capacity.

Sec. 86-490. - Regulated signs.

- (a) Ground signs, which are permanent, shall be permitted in non-residential zoning districts. **No ground sign shall have a height greater than six feet above normal grade, or a sign face area greater than 35 square feet (each side) for lots with a single building and 45 square feet (each side) for planned centers. No portion of a ground**

### FOLLOW-UP APPROVAL ACTION (City Clerk)

## Typed Name and Title

Ricky L. Clark, City Manager

## Date

October, 6, 2021

## Signature

City Clerk's Office

sign shall not be located within ten feet of a street right-of-way or within 50 feet of any other permanent sign or major structure or building. Changeable copy shall not exceed 33 percent of the area of the sign face. Ground signs are allowed only on lots upon which there is a building which is currently occupied pursuant to a current and valid certificate of occupancy issued by the city or which is currently being developed under an active building permit issued by the city.

**The proposed sign complies with the panel size and height requirements. It is closer to the building than 50 feet (30 feet), and likely closer to the right-of-way line than 10 feet. However, as long as the posts remain in the same place and only the panels are replaced, the sign location is grandfathered.**

*Sec. 86-495. - Historic districts.*

*The purpose of this section is to ensure that signage in the historic district is harmonious in proportion, form, color, and materials to the character of said district. Visual relatedness is crucial to the goal of an integrated historic district, and signs play a key role in helping to preserve the historical district's sense of time and place, and to achieve the desired effect of charm and compatibility. No sign shall be erected, altered, restored or moved within the historic district until an application for a certificate of appropriateness as to exterior architectural features and signage has been reviewed and approved by the historic preservation commission and the design review commission. All proposed changes requiring a certificate of appropriateness shall comply with the applicable design standards in the 2005 zoning ordinance.*

- (1) Applicability. This section shall apply only to those structures and uses within the geographical boundaries of the historic districts, the H-1 and H-2 zoning districts.*
- (2) Compatibility. As to signs, buildings, structures, and uses within the historic districts, when a provision of this section conflicts with any section in the balance of this article, the provision of this section shall control. Otherwise, to the extent reasonably possible, the provisions of this section shall be interpreted consistent with the provisions of the balance of this article.*
- (3) Signage standards.*
  - a. General. Signage shall complement the architectural details of the building and shall not violate or otherwise obscure the architecture of the building to which it is attached. Signs, lettering, or boxed graphics shall not cut across columns, cornices, windowsills, arches or balconies, nor extend above the roofline (except for parapets and mansards) of any building to which it is attached.*
  - b. Lettering, size, and content. Letters can be painted or mounted directly on a signboard, storefront, wall or window, if in proportion to the storefront. Lots in the H-1 and H-2 historic districts are allowed the same amount of signage as lots outside of the H-1 and H-2 historic districts. In the H-1 and H-2 historic districts, canopy signs and hanging or suspended signs may be utilized. Provided, however, in no case may the total signage area exceed ten percent of the building face to which the sign is attached. Acceptable lettering materials include wood, stone, synthetic stone, metal, and acrylic. The overall design of all signage shall be compatible with the turn-of-the-century theme of the historic district.*
  - c. Materials. Signs may be constructed of concrete, brick, wood, stone, metal, glass, or synthetic materials that have the same appearance of the aforementioned natural materials due to their finish. All materials shall be compatible with the building's architecture and should be colorfast and resistant to corrosion. Signs shall be professionally finished in accordance with the material selected, whether by sanding, painting, staining and/or sealing, with the edges of the sign framed out and/or sealed.*
  - d. Lighting. All signs in the historic district, whether ground signs or wall signs, shall only be illuminated by an external light source, and through craftsmanship and materials, shall reflect the design aesthetics of the historic district.***
  - e. Colors. The historic preservation commission and the design review commission shall consider the context of the surrounding area when reviewing the color of a proposed sign in the historic districts; however, the colors and logos of nationally and regionally recognized businesses shall not be prohibited.*
  - f. Awning and canopy signs. Awnings or canopies over doors, entrances, windows or outside service areas are permitted in the H-1 historic district. Professionally applied forms, graphics, symbols, lettering, or other visual presentation may be incorporated into the awning or canopy valance/drop flap but are restricted to 20 percent of the awning field. Size of the signage shall be computed as for a wall sign. Signage pursuant to this subsection shall be included within the overall amount of signage allowed under section 86-489. Awnings or canopies shall clear sidewalks by seven feet in height, and project no more than six feet from the building. Canvas or synthetic look-alike canvas are the only materials permitted for awnings and canopies. Metal or vinyl may be approved for awnings or canopies if the overall design is consistent with the H-1 historic district's turn-of-the-century theme. Awnings or canopies may not be backlit. Metal awnings and canopies are preferred.*

- g. *Hanging or suspended signs. Hanging, suspended, or projecting signs are permitted and shall clear sidewalks by seven feet in height, and project or drop no more than 36 inches from the building. Hanging or suspended signs should project or drop from a wall or roof at a 90-degree angle. Hanging or suspending signs over driveways, alleys, or parking areas is prohibited. Hanging, suspended, or projecting signs shall be limited to a maximum size of six square feet, and if double sided, shall be calculated as only one sign. One hanging, suspended, or projecting sign per business is permitted, and shall be calculated as part of the total signage area allowed under section 86-489. Attractive hardware for hanging is encouraged.*
- h. *Window signs. Interior window signs shall not exceed 25 percent of the total window area exposed to public view. Window signs shall not be included within the overall amount of signage allowed under section 86-489.*
- i. *Special events. Additional signage is permitted in the historic district under section 86-494, provided that all such additional signage conforms to the aesthetic standards of the historic district.*
- j. *Ground signs. Ground signs may hang or suspend from a horizontal support that is affixed to the ground by vertical post.*
- k. *A-frame signs. A-frame or "sandwich" signs are allowed at the rate of one per business or parcel. A-frame signs shall not obstruct pedestrian or vehicular routes.*

**Fiscal Impact**

*(Include projected cost, approved budget amount and account number, source of funds, and any future funding requirements.)*

Private owner

**Exhibits Attached** *(Provide copies of originals, number exhibits consecutively, and label all exhibits in the upper right corner.)*

- Property Pictures
- Panel Design
- Acceptance Letter

**Staff Recommendation** *(Type Name, Title, Agency and Phone)***Approval**

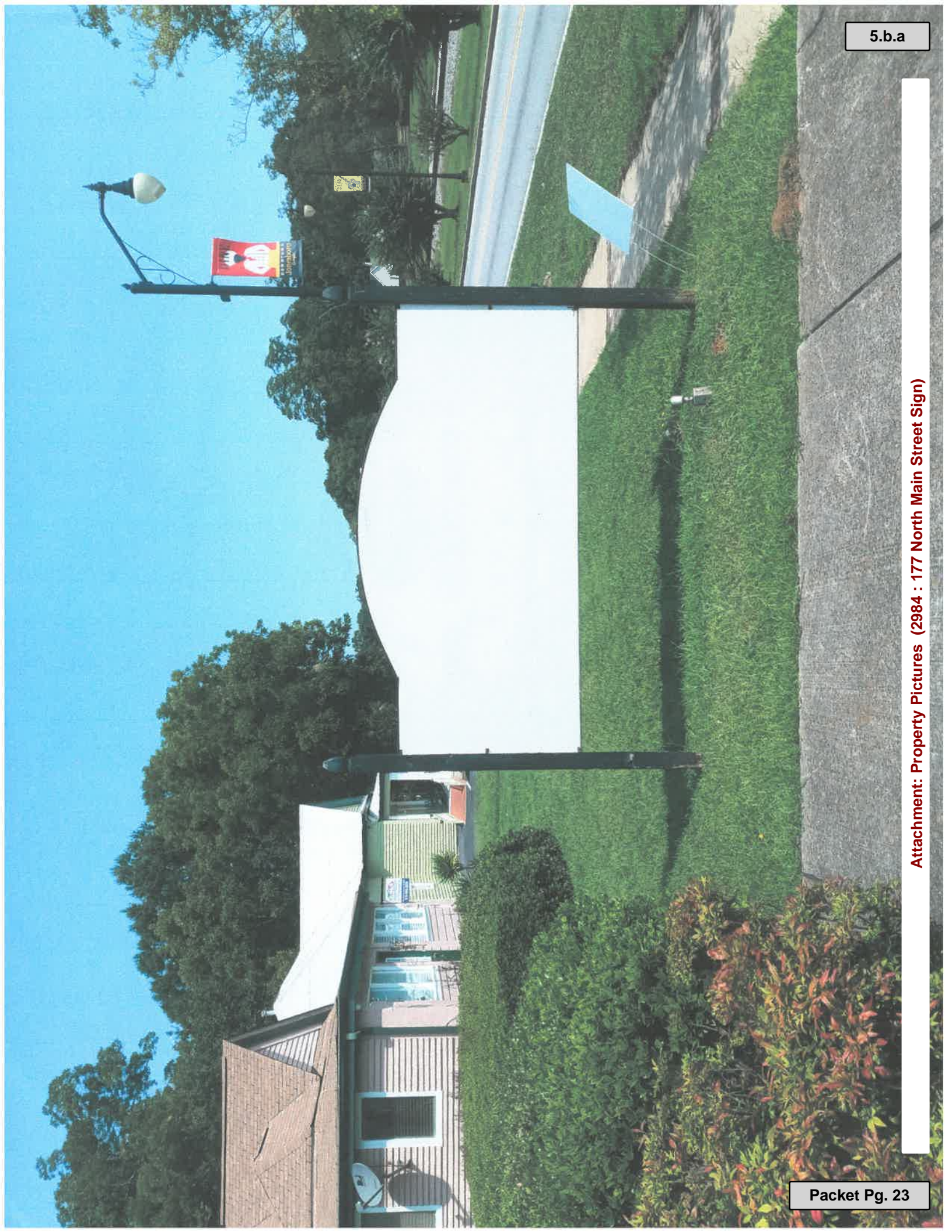


Image capture: Feb 2021 © 2021 Google

Jonesboro, Georgia



Street View - Feb 2021



# TOTAL LIFESTYLE CHANGE

Dr. Lenore T. Coleman



**Wellness**  
CONNEXIONS

# ELDER CARE SERVICES

**800 788 0941**

**[www.hovhealth.com](http://www.hovhealth.com)**



## MEMORANDUM

**To:** Dr. Lenore Coleman  
177 North Main Street  
Jonesboro, Ga. 30236

**From:** David D. Allen  
City of Jonesboro  
124 North Avenue  
Jonesboro, GA 30236

**Date:** October 1, 2021

**Re:** Notification of Request for Design Review Commission – Replacement Sign Panel; 177 North Main Street; Parcel Nos. 13240D C004

---

Dear Applicant,


This letter is to serve as notification that the City of Jonesboro, Design Review Commission, has accepted your request for review of replacement sign panels located at the property specified above in Jonesboro, Georgia.

Due to the COVID-19 outbreak, the review meeting will be conducted by members via a remote conference call (Zoom Meetings) on Wednesday, October 6, 2021 at 4:30 pm. You will be provided a link to the meeting to participate if you wish. If you are unable to be a part of the meeting, then you will be informed of the recommendation on the following day.

Sincerely,

David D. Allen  
Community Development Director / Zoning Administrator

Attachment: Acceptance Letter (2984 : 177 North Main Street Sign)

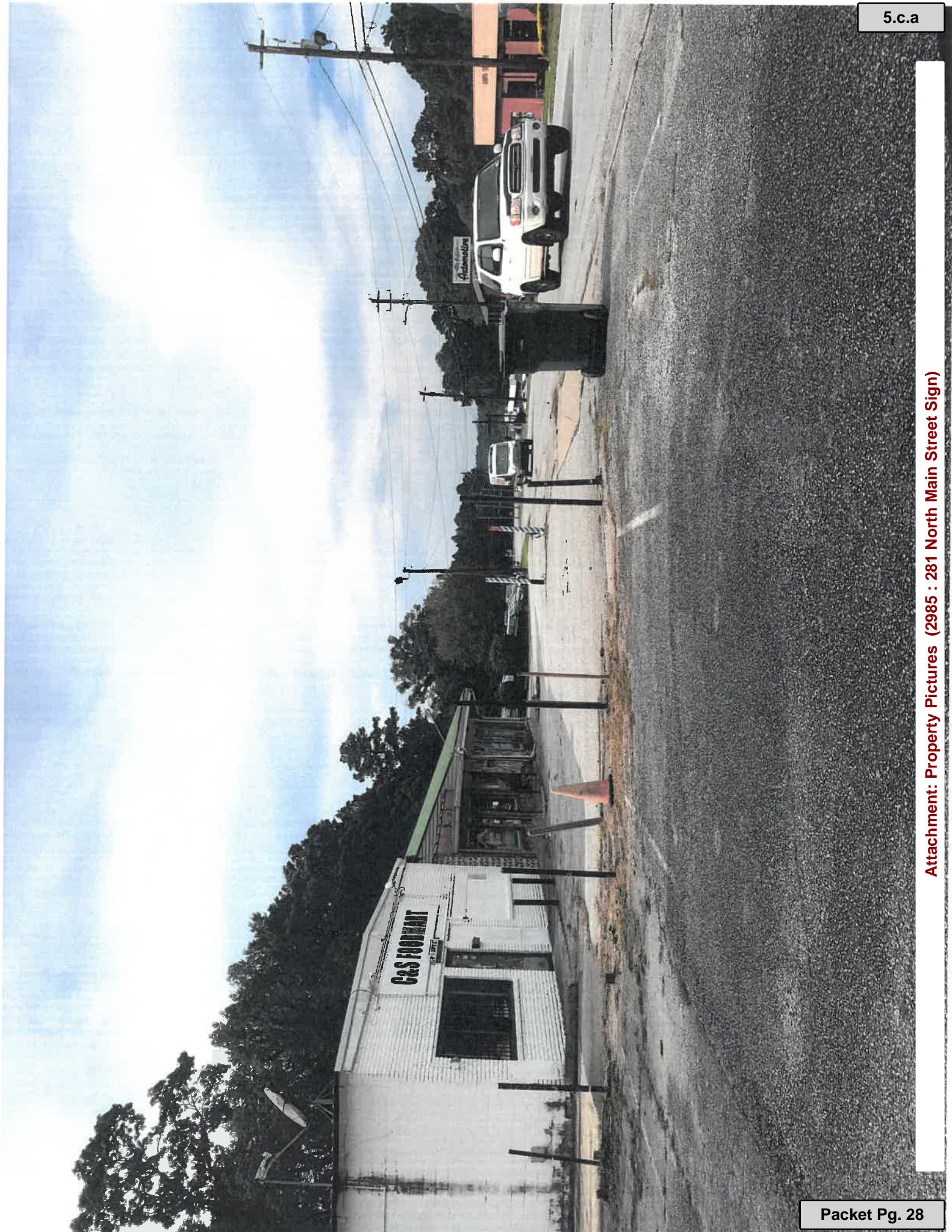
	<b>CITY OF JONESBORO, GEORGIA COUNCIL</b> <b>Agenda Item Summary</b>	<b>Agenda Item #</b> <b>- c</b>	<b>5.c</b>
		<b>COUNCIL MEETING DATE</b> October 6, 2021	
<b>Requesting Agency (Initiator)</b> Office of the City Manager		<b>Sponsor(s)</b> Community Development Director Allen	
<b>Requested Action</b> <i>(Identify appropriate Action or Motion, purpose, cost, timeframe, etc.)</i> Commission to make a recommendation for Main Street Grocery Mart – 281 North Main Street; Parcel No 13209C C003; New sign panel for new business.			
<b>Requirement for Board Action</b> <i>(Cite specific Council policy, statute or code requirement)</i> City Code Section 86-489 and 86-490 – Sign Standards			
<b>Is this Item Goal Related?</b> <i>(If yes, describe how this action meets the specific Board Focus Area or Goal)</i> Yes                      Beautification, Community Planning, Neighborhood and Business Revitalization			
<b>Summary &amp; Background</b> <span style="float: right;"><i>(First sentence includes Agency recommendation. Provide an executive summary of the action that gives an overview of the relevant details for the item.)</i></span> <p><b>Agency recommendation – Approval of sign panel design, but not proposed height;</b> A grocery store has been located at 281 North Main Street off and on through the years. The current owner is proposing to install a double-sided sign panel between the metal poles at the front of the parking lot (see picture), where several other business signs have been in the past. No wall sign is currently proposed. The property is not in any Overlay or Historic District.</p> <p>The new ground sign panel will be installed between the two black metal poles at the front of the parking lot. The size (each side) will be 28 square feet, which is below the 35 square feet maximum (each side) allowed in Section 86-490(a) for ground sign panels. The black, red, and white color scheme of the sign will not conflict with nearby businesses. The framework has been there for many years and has hosted many different businesses. The sign will not be illuminated. The poles in their present location are grandfathered in in terms of location.</p> <p>The existing poles are already 6 feet in height, the maximum allowable height for ground signs without a variance. Therefore, if the panel was out between the two poles and even with the top of the poles, it would not exceed 6 feet in height. However, the sign contractor would like to extend the pole height (and the top of the sign) to 10 feet tall, for the purposes of greater visibility and allowing vehicles exiting the adjacent parking lot to be able to see oncoming vehicles clearly. Staff has taken a picture (enclosed) of where a vehicle would wait to exit out of the adjacent parking lot and believes that the subject sign is far enough off of the road to not cause a visibility issue at 6 feet in height. <b>Therefore, staff does not recommend approval of the proposed 10-foot height of the sign.</b></p>			
<b>Fiscal Impact</b> <span style="float: right;"><i>(Include projected cost, approved budget amount and account number, source of funds, and any future funding requirements.)</i></span> Private owner			
<b>Exhibits Attached</b> <i>(Provide copies of originals, number exhibits consecutively, and label all exhibits in the upper right corner.)</i> <ul style="list-style-type: none"> <li>Property Pictures</li> <li>Panel Design</li> <li>Acceptance Letter</li> </ul>			

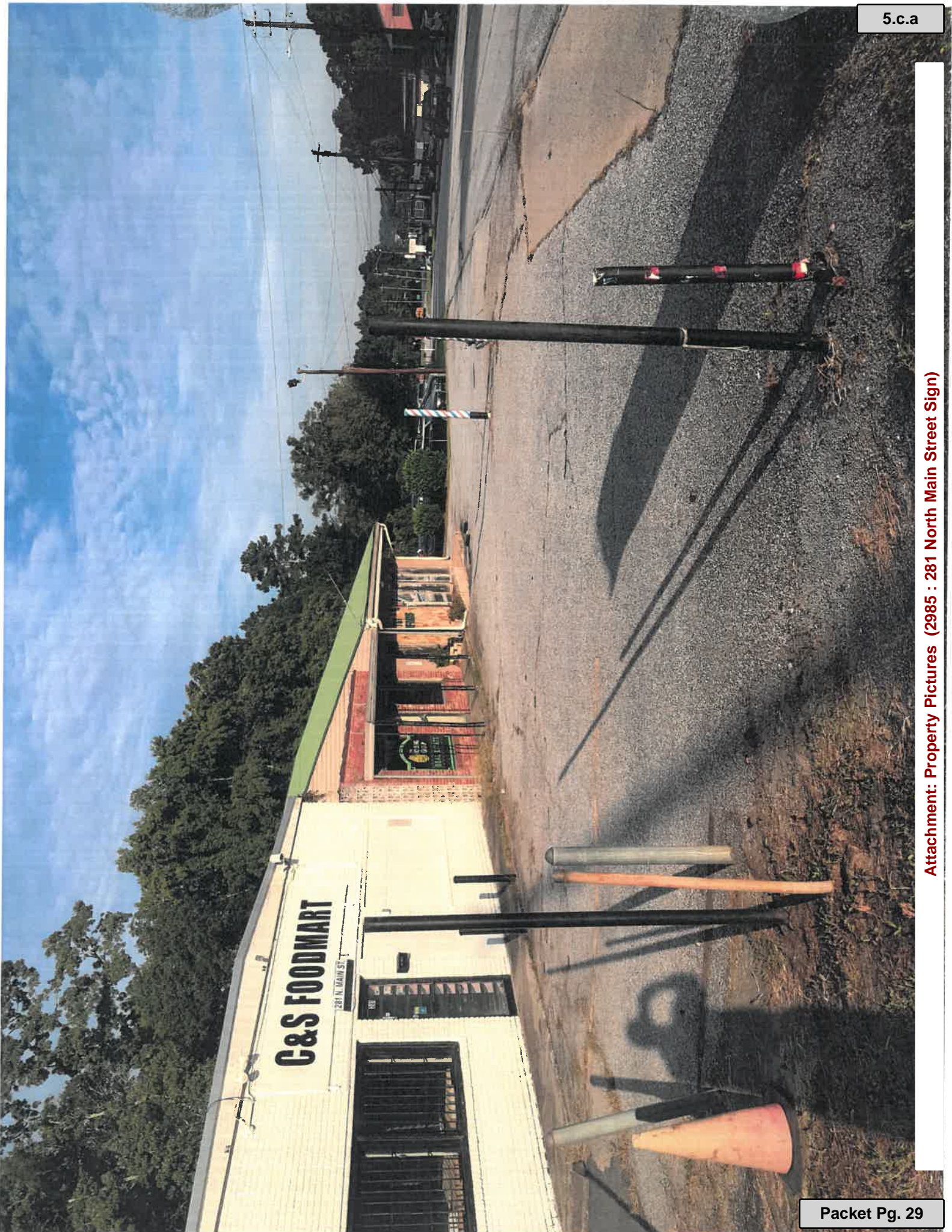
<b>FOLLOW-UP APPROVAL ACTION (City Clerk)</b>		
<b>Typed Name and Title</b> Ricky L. Clark, City Manager	<b>Date</b> October, 6, 2021	
<b>Signature</b>	<b>City Clerk's Office</b>	

**Staff Recommendation** *(Type Name, Title, Agency and Phone)*

5.c

**Approval of Panel Design**

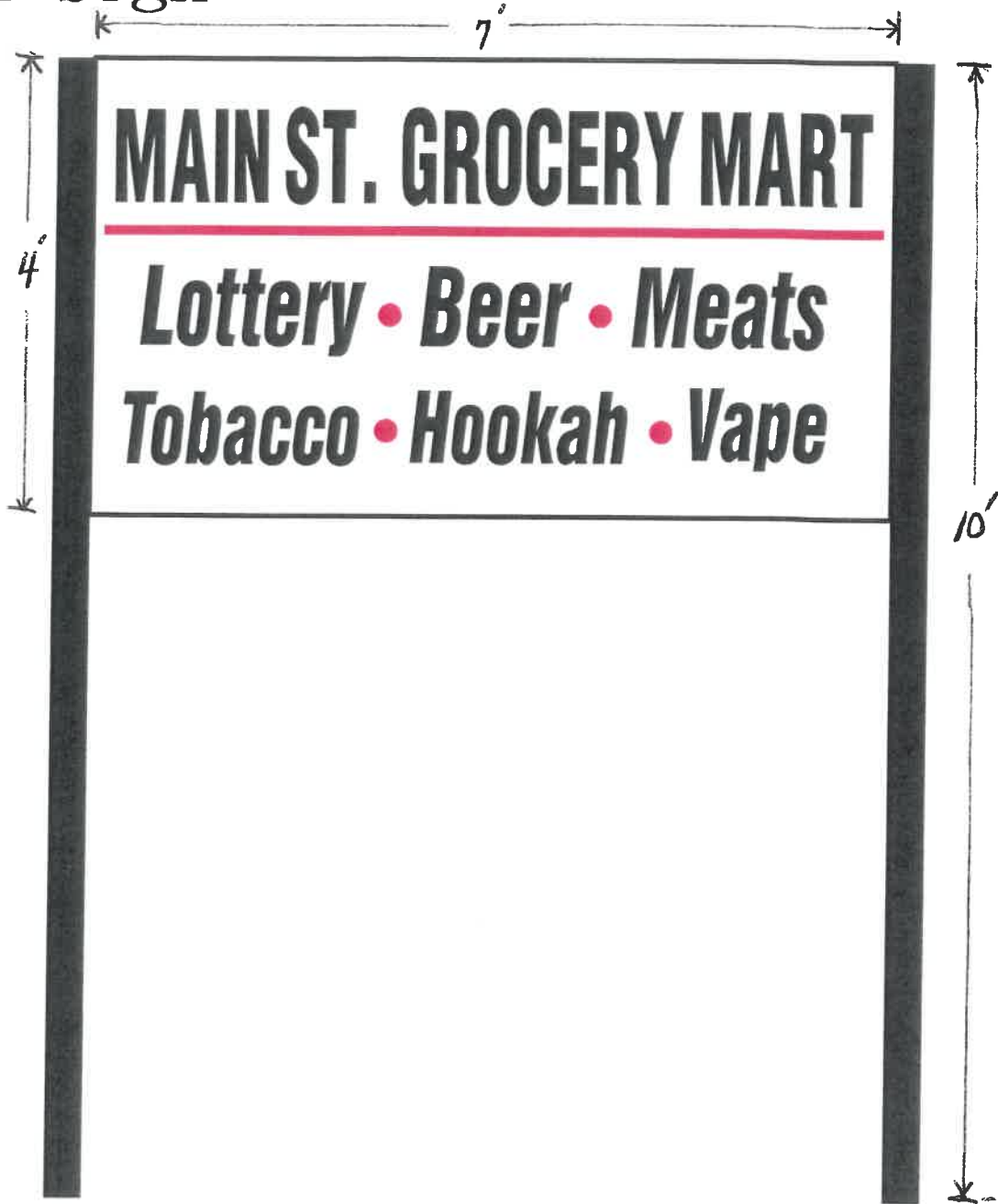






Attachment: Property Pictures (2985 : 281 North Main Street Sign)

## Pylon Sign



6'  
EXISTING  
POLE

Attachment: Panel Design (2985 : 281 North Main Street Sign)





## MEMORANDUM

**To:** Debabrata Roy  
281 North Main Street  
Jonesboro, Ga. 30236

**From:** David D. Allen  
City of Jonesboro  
124 North Avenue  
Jonesboro, GA 30236

**Date:** October 1, 2021

**Re:** Notification of Request for Design Review Commission – Sign Panels; 281 North Main Street; Parcel Nos. 13209C C003

---

Dear Applicant,

This letter is to serve as notification that the City of Jonesboro, Design Review Commission, has accepted your request for review of sign panels located at the property specified above in Jonesboro, Georgia.

Due to the COVID-19 outbreak, the review meeting will be conducted by members via a remote conference call (Zoom Meetings) on Wednesday, October 6, 2021 at 4:30 pm. You will be provided a link to the meeting to participate if you wish. If you are unable to be a part of the meeting, then you will be informed of the recommendation on the following day.

Sincerely,

David D. Allen  
Community Development Director / Zoning Administrator

Attachment: Acceptance Letter (2985 : 281 North Main Street Sign)



# CITY OF JONESBORO, GEORGIA COUNCIL

## Agenda Item Summary

Agenda Item #

5.d

- d

COUNCIL MEETING DATE

October 6, 2021

## Requesting Agency (Initiator)

Office of the City Manager

## Sponsor(s)

Community Development Director Allen

Requested Action *(Identify appropriate Action or Motion, purpose, cost, timeframe, etc.)*

Commission to make a recommendation for Restaurant – 234 South Main Street; Parcel No. 05241D D008A; Renovation of existing business for restaurant.

Requirement for Board Action *(Cite specific Council policy, statute or code requirement)*

Chapter 86 – Zoning; Sec. 86-118 Gateway South Overlay District Architectural Standards

Is this Item Goal Related? *(If yes, describe how this action meets the specific Board Focus Area or Goal)*

Yes Economic Development, Beautification, Community Planning, Neighborhood and Business Revitalization

## Summary &amp; Background

*(First sentence includes Agency recommendation. Provide an executive summary of the action that gives an overview of the relevant details for the item.)*

Agency recommendation – **Denial of exterior modifications**; 234 South Main Street has served as the location for several businesses through the years, most recently the Treasure Seekers thrift store. The property fronts both South Main Street and Batiste Park Road. The most recent owner, Mr. Estrada, purchased the property a couple of years ago and intended to put a restaurant there prior to Covid. He has now submitted formal plans for the restaurant, including a rendering of the exterior (enclosed), which shows a significant renovation in the shape and materials of the building. The property is zoned C-1 (Neighborhood Commercial) and is now located in the recently adopted Gateway South Overlay District, with its own specific architectural standards for certain types of buildings.

5) Other **commercial** and office buildings.

(a) For lots directly fronting Tara Boulevard or **South Main Street**.

(1) Prohibited materials. Metal siding, vinyl siding, and smooth-faced concrete masonry units, as primary building materials, are prohibited. **The rendering shows cement siding and stacked stone on the bottom half of the front façade.**

(2) Permitted primary materials. Primary building materials for the exterior wall facade most directly facing Tara Boulevard or **South Main Street** shall be constructed, at a minimum, of **70% full-depth brick (not veneers)** plus the following options for the remainder of the wall facade: cast stone, cementitious siding (Hardiboard), high-quality stucco or glass. **Primary building materials for exterior wall facades not directly facing, but still viewable from Tara Boulevard or South Main Street shall be constructed, at a minimum, of 50% full-depth brick (not veneers) plus the following options for the remainder of the wall facades: cast stone, cementitious siding (Hardiboard), high-quality stucco or glass. (Note: With the priority being majority brick façades, the 40% window coverage requirement for the Tara Boulevard Overlay District will not be considered.) No brick is shown on the front façade or the side facing Batiste Park Road, just stacked stone on front and cement siding on the side.**

(3) Permitted accent materials. Accent building materials for all exterior wall facades may include brick, textured concrete masonry units, wood panels (including wood shake), metal panels, and metal canopies. **The primary accent material is stucco near the roof (orange and beige portions).**

(4) Exceptions. Vinyl products shall only be used for soffits, eaves, and fascia. **No vinyl siding will be used.**

(5) Color. All materials shall be earth-tone in color, as approved by the Design Review Commission and the Mayor and

### FOLLOW-UP APPROVAL ACTION (City Clerk)

## Typed Name and Title

Ricky L. Clark, City Manager

## Date

October, 6, 2021

## Signature

City Clerk's Office

Council. **The proposed materials are earth-tone in color.**

(6) *Roofing materials.* All asphalt-shingle roofing shall consist of high-quality, architectural shingles, with a minimum 30-year warranty. **Metal roofing is also permitted. The roof will be commercial grade asphalt shingle.**

(7) *Entrance features.* All customer entrances located along the front façade, shall feature a combination of three or more of the following features: canopies and porticos, overhangs, recesses or projections, arcades, raised / corniced parapets, peaked roof forms, arches, display windows, and architectural details, such as tile work and moldings which are incorporated into the building structure and design. **While there are new parapets, there are not features like arches or canopies.**

(8) *Minimum facade height.* A minimum facade height of 18 feet shall be maintained on arterial and collector roadways. **The top of the new center parapet is a little over 19 feet tall. The side parapets, however, are only 16 feet tall.**

(9) *Roof features.* Rooflines shall incorporate roof features (extensions, and/or projections such as a gable, parapet, dormers or others) that achieve visual interest through variation of the roofline. These features shall conform to the following specifications:

1. Roof features shall not exceed the average height of the supporting walls.
2. The average height of parapets shall not exceed 15 percent of the height of the supporting wall. Parapets shall feature three-dimensional cornice treatments.
3. Cornices shall have perceptible projection or overhanging eaves that extend past the supporting walls.
4. The roof pitch of sloped roofs shall be a minimum of 4:12 (vertical to horizontal). **The roof will be largely hidden by the new parapets.**

(10) *Rooftop equipment.* All rooftop equipment shall be screened from public view by parapets, dormers or other screens. **The new parapets should hide any rooftop equipment from the road.**

(11) *Massing and modulation.* The massing of building facades oriented to public streets shall incorporate either modulation, defined here as a wave in the exterior wall, with horizontal breaks at least every 100 feet. Front facade design shall provide varying wall offsets and other architectural features to create horizontal (wall) and vertical building articulation. **Not applicable.**

**While the proposed renovations are certainly an improvement over the existing design of the building, the proposed exterior does not meet all of the Gateway South Overlay District architectural standards, in terms of using full-depth brick, the use of stucco, and the lack of adequate entrance features.**

**Fiscal Impact**

(Include projected cost, approved budget amount and account number, source of funds, and any future funding requirements.)

Private owner

**Exhibits Attached** (Provide copies of originals, number exhibits consecutively, and label all exhibits in the upper right corner.)

- Property Pictures
- Construction Plans
- Exterior Design
- Acceptance Letter

**Staff Recommendation** (Type Name, Title, Agency and Phone)

**Denial of Current Design**

Google Maps 208 S Main St



Image capture: Jun 2019 © 2021 Google

Jonesboro, Georgia



Street View - Jun 2019

Side St

Key

https://

Google Maps 101 Batiste Rd



Image capture: Jun 2019 © 2021 Google

Jonesboro, Georgia



Street View - Jun 2019

Idle St (King St)

ps://

COVER SHEET & LOCATION PLAN

TABLE OF CONTENTS

- A1 - COVER SHEET & LOCATION PLAN
- A2 - ABBREVIATIONS, SYMBOLS & FRAMING NOTES
- A3 - PROPOSED FLOOR LAYOUT
- A4 - PROPOSED EXTERNAL ELEVATIONS
- A5 - EQUIPMENT LAYOUT
- A6 - LIFE SAFETY & EVACUATION PLAN
- A7 - DOOR & WINDOW SCHEDULE
- A8 - ROOF LAYOUT EXISTING
- A9 - PARAPET ROOF FRAMING DETAILS
- A10 - PROPOSED PARKING ANALYSIS
- A11 - FRAMING DETAIL
- A12 - GENERAL NOTES
- A13 - ADA DETAILS
- A14 - PLUMBING RISER DIAGRAM

PROJECT NAME:  
PROPOSED RESTAURANT

PROJECT ADDRESS:  
234 S MAIN STREET  
JONESBORO, GA 30236

SCOPE OF WORK:  
MODIFICATIONS TO EXISTING BUILDING TO  
ACCOMMODATE A RESTAURANT

PARCEL & STRUCTURE INFORMATION:  
PARCEL ID: 05241D D008A  
ZONING: C-1  
ACREAGE: 0.69  
IN FLOOD PLAIN?: NO  
OCCUPANCY CLASSIFICATION: ASSEMBLY A2  
BUILDING CONSTRUCTION TYPE: VB  
UNSPRINKLERED  
OCCUPANT LOAD: 141  
LONGEST EXIT ACCESS DISTANCE: 68 FT  
BLDG FLOOR AREA: 4,592 SF:

APPLICABLE CODES:  
INTERNATIONAL BUILDING CODE: 2018 EDITION, WITH GEORGIA AMENDMENTS  
INTERNATIONAL FIRE CODE: 2018 EDITION, WITH GEORGIA AMENDMENTS  
INTERNATIONAL PLUMBING CODE: 2018 EDITION, WITH GEORGIA AMENDMENTS  
INTERNATIONAL MECHANICAL CODE: 2018 EDITION, WITH GEORGIA AMENDMENTS  
INTERNATIONAL FUEL GAS CODE: 2018 EDITION, WITH GEORGIA AMENDMENTS  
NATIONAL ELECTRICAL CODE: 2017 EDITION, WITH NO GEORGIA AMENDMENTS  
INTERNATIONAL ENERGY CONSERVATION CODE: 2015 EDITION, WITH GEORGIA  
SUPPLEMENTS AND AMENDMENTS  
NFPA 101: LIFE SAFETY CODE 2018 WITH STATE AMENDMENTS



Digitally signed by E.C. Gelot  
P.E.  
DN: cn=E.C. Gelot P.E.  
gn=E.C. Gelot P.E. c=United  
States l=US  
e=georgiaengineer@gmail.com  
Reason: I am the Professional  
Engineer responsible for this  
document  
Location: 3509 Spain Road,  
Snellville, GA 30039  
Date: 2021-09-14 12:14:04:00



FOR INFORMATION CONTACT  
ROGER ESTRADA  
234 S MAIN STREET  
JONESBORO, GA 30236

LOCATION  
234 S MAIN STREET  
JONESBORO, GA 30236

SHEET TITLE  
COVER SHEET  
&  
LOCATION PLAN

REVISIONS

NO	DATE
1	
2	
3	

DRAWN BY

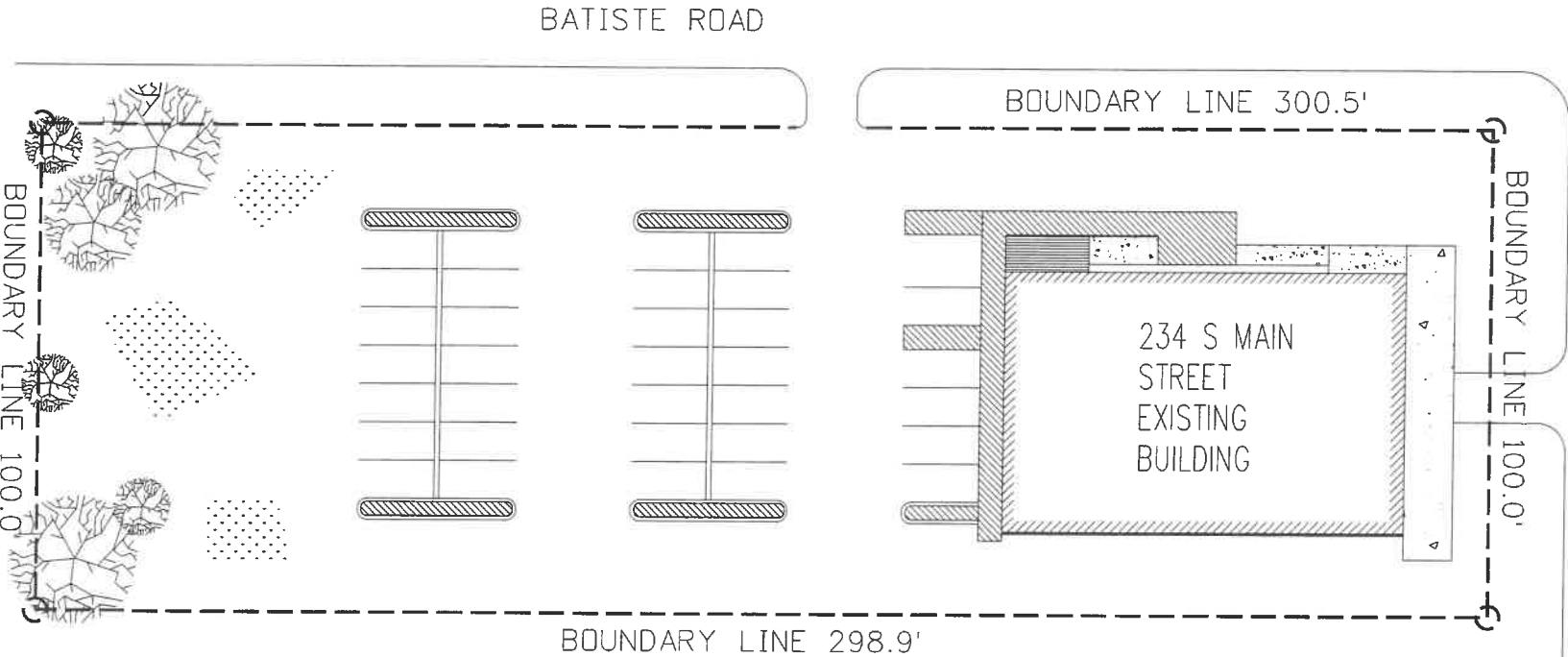
RLH

Date 4/13/2021

Scale 3/8"=1'-0"

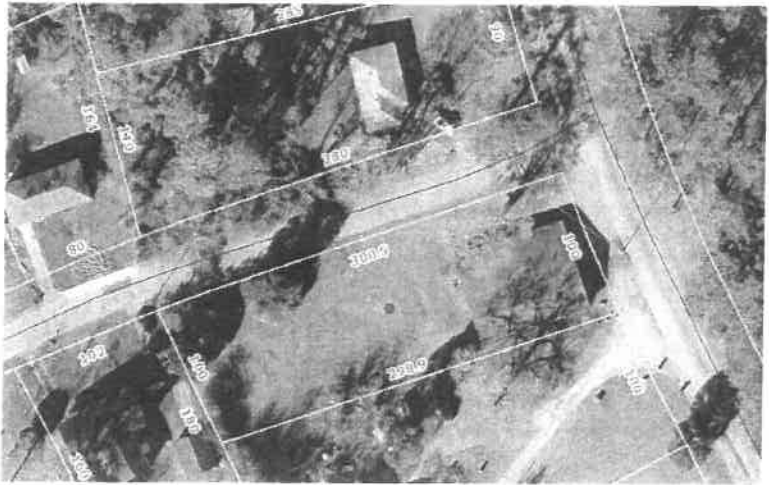
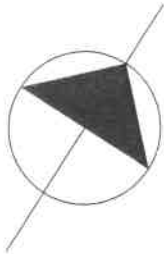
DWG No.

A1



LOCATION PLAN

NOT TO SCALE





FOR INFORMATION CONTACT  
ROGER ESTRADA  
234 S MAIN STREET  
JONESBORO, GA 30236

LOCATION  
234 S MAIN STREET  
JONESBORO, GA 30236

SHEET TITLE  
PROPOSED FLOOR LAYOUT

REVISIONS

NO	DATE
1	
2	
3	

DRAWN BY

RLH

Date 4/13/2021

Scale 3/16"=1'-0"

DWG No.

A3

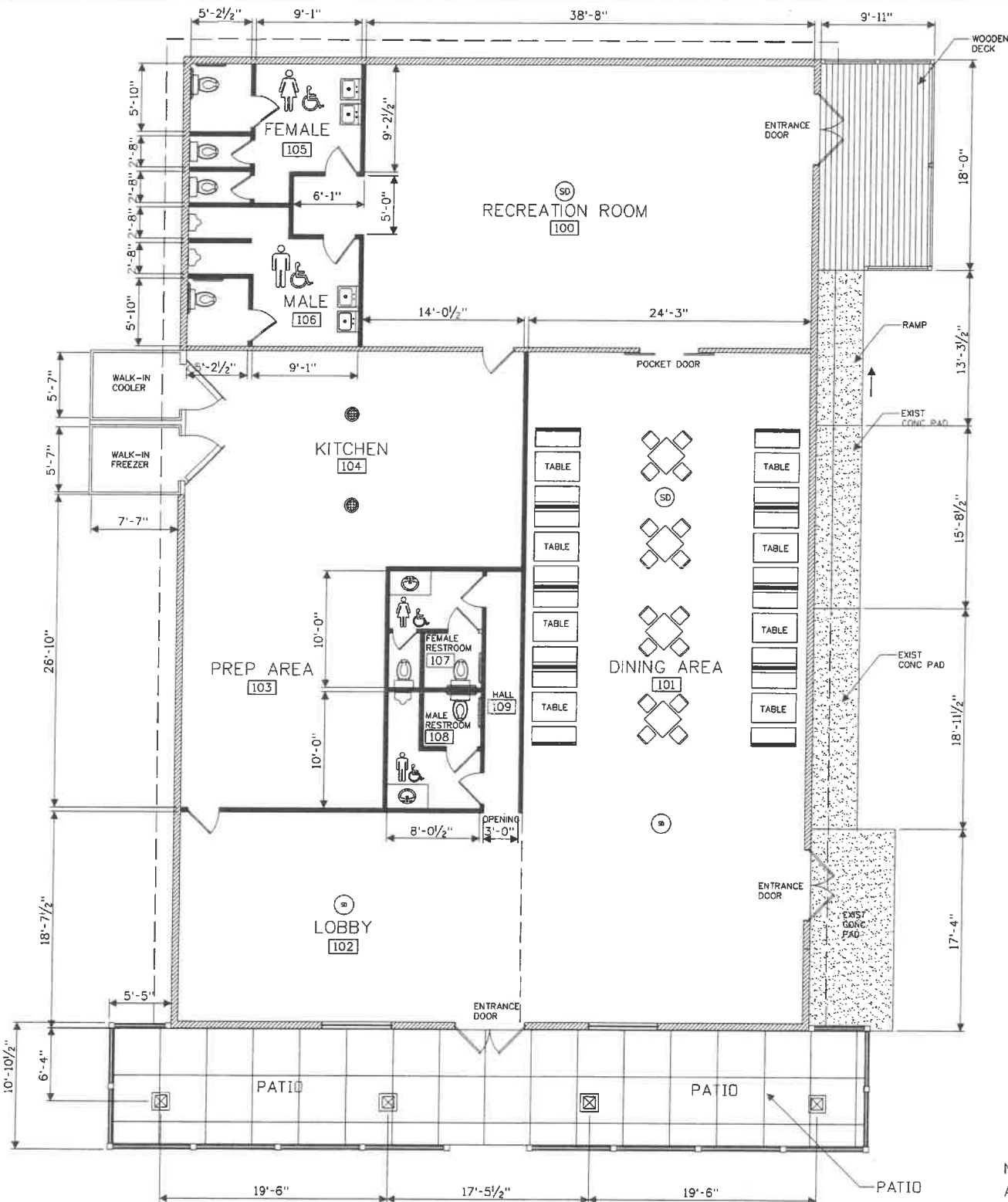
ITEM	DESCRIPTION
STUDS: (2X4)	SOUTHERN PINE STUD GRADE
POST BEAMS AND HEADERS	SOUTHERN PINE GRADE 1
ALL OTHER HORIZONTAL	SOUTHERN PINE GRADE 2
ALL OTHER VERTICAL	SOUTHERN PINE GRADE 2
PLYWOOD:	
STRUCTURAL SHEATHING	GRADE MARKED STRUCTURAL 1
PLYCLIPS	PSC'S BY SIMPSON OR EQUAL
LAG BOLTS	ANSI/ASME B18.2.6-2019 FASTENERS FOR USE IN STRUCTURAL APPLICATIONS
NAILS	ASTM F-1667-21 STND SPEC FOR DRIVEN FASTENERS
SCREWS	ANM1 B18.6.1 / ASTM A502
JOIST HANGERS	SIMPSON OR EQUAL
CONNECTORS	SIMPSON OR EQUAL (USE GALVANIZED AT EXTERIOR LOCATIONS)

ROOM DATA		
NO	DESCRIPTION	SQ. FT.
100	RECREATION	999
101	DINING AREA	1396
102	LOBBY	530
103	PREP AREA	262
104	KITCHEN	487
105	FEMALE RESTROOM	80
106	MALE RESTROOM	80
107	STORAGE	32
108	OFFICE	87
109	FEMALE	96
110	MALE	96

LEGEND:

- NEW WALLS
- EXISTING WALLS TO REMAIN

NOTE:  
ALL DIMENSIONS ARE TO BE  
CHECKED AND VERIFIED ON  
SITE PRIOR TO CONSTRUCTION.



PROPOSED FLOOR LAYOUT  
3/16"=1'-0"



FOR INFORMATION CONTACT  
ROGER ESTRADA  
234 S MAIN STREET  
JONESBORO, GA 30236

LOCATION  
234 S MAIN STREET  
JONESBORO, GA 30236

SHEET TITLE  
PROPOSED  
EXTERNAL ELEVATIONS

REVISIONS

NO	DATE
1	
2	
3	

DRAWN BY

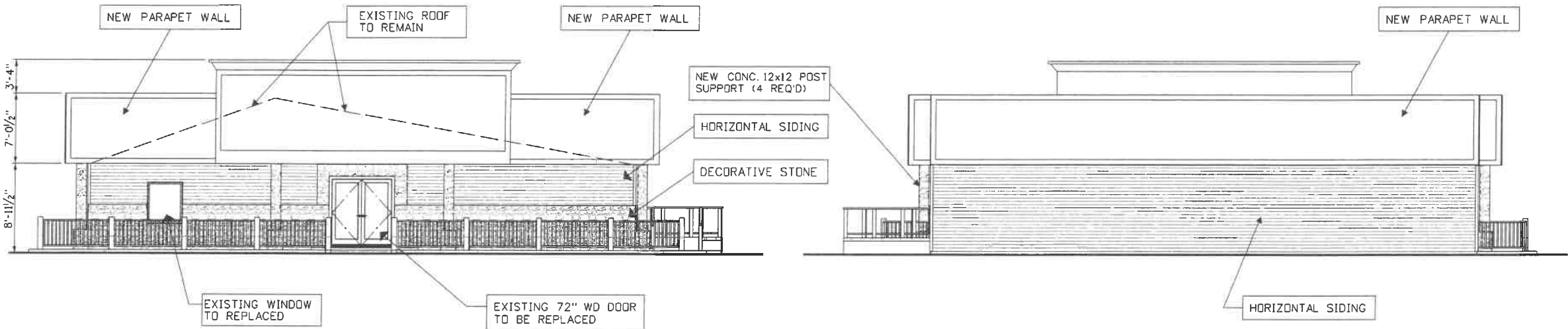
RLH

Date 4/13/2021

Scale 3/16"=1'-0"

DWG No.

A4



PROPOSED FRONT ELEVATION

3/16"=1'-0"

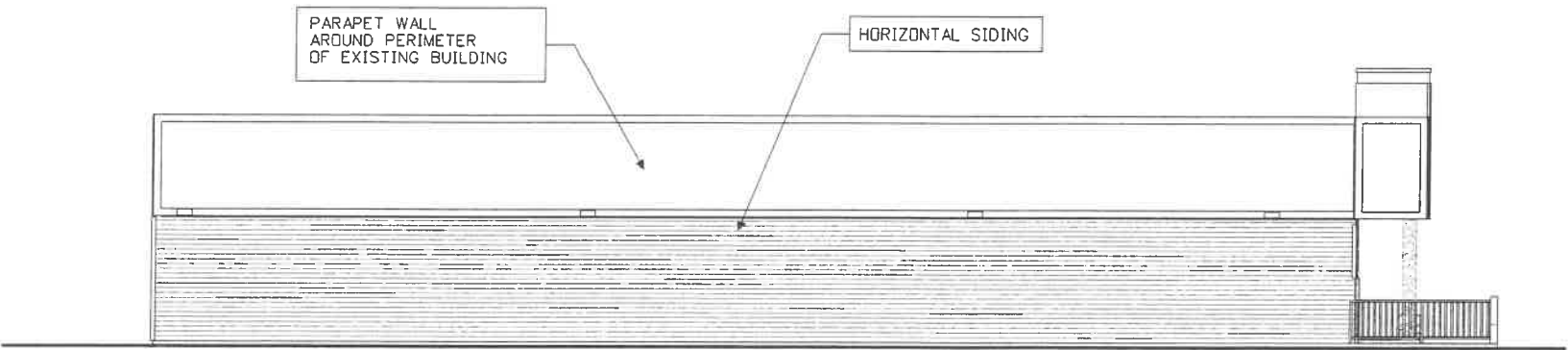
PROPOSED REAR ELEVATION

3/16"=1'-0"



PROPOSED RIGHT ELEVATION

3/16"=1'-0"



PROPOSED LEFT ELEVATION

3/16"=1'-0"

NOTE:  
ALL DIMENSIONS ARE TO BE  
CHECKED AND VERIFIED ON  
SITE PRIOR TO CONSTRUCTION.

Roger Estrada  
(404) 408-4662.



Attachment: Exterior Design (2986 : 234 South Main Street)



## MEMORANDUM

**To:** Roger Estrada  
234 South Main Street  
Jonesboro, Ga. 30236

**From:** David D. Allen  
City of Jonesboro  
124 North Avenue  
Jonesboro, GA 30236

**Date:** October 1, 2021

**Re:** Notification of Request for Design Review Commission – Restaurant; 234 South Main Street; Parcel Nos. 05241D D008A

---

Dear Applicant,

This letter is to serve as notification that the City of Jonesboro, Design Review Commission, has accepted your request for review of a restaurant design located at the property specified above in Jonesboro, Georgia.

Due to the COVID-19 outbreak, the review meeting will be conducted by members via a remote conference call (Zoom Meetings) on Wednesday, October 6, 2021 at 4:30 pm. You will be provided a link to the meeting to participate if you wish. If you are unable to be a part of the meeting, then you will be informed of the recommendation on the following day.

Sincerely,

David D. Allen  
Community Development Director / Zoning Administrator

Attachment: Acceptance Letter (2986 : 234 South Main Street)